



365

EQUIPMENT
& SUPPLY

**SAVE TIME. GET THE SUPPLIES YOU
NEED DELIVERED, AT LOW PRICES.**

What 365 has to offer



Conveniently located in the heart of the Midwest – Barrington, Illinois – 365 Equipment & Supply is your one-stop-shop for everything construction-related and beyond. If we do not have it on site or in stock, we will get it and have it delivered to you.

We have a great deal of experience working with contractors and going the extra mile to get the supplies, materials and equipment required to efficiently keep a job on schedule and on budget. We value building partnerships that last and our

experience working with regional contractors has allowed us to develop much more aggressive pricing and a broader range of services than those offered by our competitors. 365 Equipment & Supply is also the exclusive LoadFast rental agent in the 16-state Midwest Region.

**And remember – OUR NAME IS OUR PROMISE.
We make everything available for delivery on-demand.**

Table of Contents

Tool Accessories	1-7
Sealants, Caulks & Adhesives	8
Safety Supplies	9-17
Concrete Accessories	18
Miscellaneous Items.....	19-37
Manufacturers Represented	38
Product Index	39-40



Don't see it? We can get it!

At 365 Equipment & Supply we pride ourselves on being able to get our customers what they need, when they need it.

**410 South Hager Ave
Barrington, IL 60010**

365equipmentandsupply.com

847-756-3807



DIAMOND BLADES & CUP GRINDERS

High Speed Turbo Blades



Dry / Wet

Turbo blades offer a faster cut than segmented blades due to the serrated segment design, allowing less surface-to-surface contact.



Size	Item #
4" x .080 x 7/8"	21124
4-1/2" x .080 x 7/8"	21134
5" x .080 x 7/8"	21139
6" x .080 x 7/8"	21141
7" x .095 x 7/8"	21163
8" x .095 x 7/8"	21183
9" x .095 x 7/8"	21203
10" x .110 x 1"	21204
12" x .125 x 1"	21205
14" x .125 x 1"	21212

Delux-Cut

- General purpose.
- Basic quality diamond.
- Economical cutting value.
- Diamond Depth: .400" (10mm)
- Segment Height: .500" (13mm)

UNV = 1" and 20mm universal arbor
4" - 10" blades include 5/8" bushing



Size	Item #
4" x .080 x 7/8"	74959
4-1/2" x .080 x 7/8"	74960
5" x .080 x 7/8"	80002
6" x .080 x 7/8"	80003
7" x .095 x 7/8"	74961
8" x .095 x 7/8"	80004
9" x .095 x 7/8"	80005
10" x .110 x 1"	80006
12" x .125 x 1"	74962
14" x .125 x 1"	74964

Star Blue

- General purpose.
- Good quality diamond.
- Good cutting value.
- Diamond Depth: .370" (9mm)
- Segment Height: .470" (12mm)

4" - 10" - Circular saws
4", 4-1/2" & 7" - Side grinders
12" & 14" - High speed hand and masonry saws

High Speed Diamond Blades

Dry / Wet



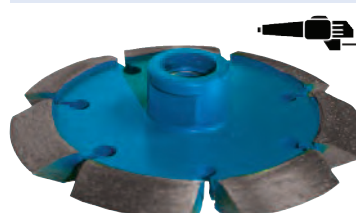
Size	Item #
10" x .110 x 1"	17710
12" x .110 x UNV	92398
14" x .125 x UNV	85261
16" x .125 x UNV	21424
18" x .125 x 1"	63599

Star Blue

- General purpose.
- Good quality diamond.
- Good cutting value.
- Diamond Depth: .375" (10mm)
- Segment Height: .475" (12mm)

V-Crack Blades

Dry / Wet



Size	Item #
4"	02739
7"	02746

Note: 5/8"-11 hub unless otherwise noted.

Star Blue

- Good quality diamond.
- Good cutting value.
- Cleans, routs & repairs cracks in concrete & other materials.
- Fast cutting while leaving clean groove.
- Segment design provides longer life.
- Segment Width: .310 at widest point.

Cup Grinders – Low Profile

Dry



Size	Segment	Item #
5" x 5/8"-11	SR	84635
5" x 7/8"	SR	48352
5" x 5/8"-11	ST	48359
5" x 7/8"	ST	48389

Standard Gold

- Grinding medium to hard concrete.
- High quality diamond.
- Better grinding value.
- Single Row (SR): 7 Segments, basic grinding and removal.
- Spiral Turbo (ST): 12 Segments, fast, heavy grinding and removal.

Cup Grinders – Double Row

Dry



Size	Item #
4" x 5/8"-11	22410
4-1/2" x 5/8"-11	22415
5" x 5/8"-11	42541
7" x 5/8"-11	22418
7" x 7/8"	38971

Delux-Cut Segmented

- General grinding and removal with a smooth finish.
- Basic quality diamond.
- Economical grinding value.





SAW BLADES



7-1/4" x 24 Tooth Framing Saw Blade, 5/8" Arbor, .059" Kerf, #D0724A

Cutting Wood Framing

- Tracking Point™ tooth design provides straight cuts and controls carbide wear for up to 5x longer cutting life vs. other blades.
- Tracking Point™ tooth design also delivers extreme cutting efficiency in corded and cordless saws (30% more cuts per battery charge in cordless saws vs. other blades).
- Newly Enhanced Anti-Vibration design provides the ideal combination of stability and rigidity.



7-1/4" x 40 Tooth Finish Saw Blade, 5/8" Arbor, .059" Kerf, #D0740X

Finish Wood Cutting

- TiCo™ Hi-Density carbide specifically designed for each application to increase performance.
- Perma-SHIELD® Non-stick Coating protects from heat, gumming and corrosion.
- Super thin laser cut kerf for fast, durable and clean cuts.



7-1/4" x 48 Tooth Cermet II Blade for Metals and Stainless Steel, 5/8" Arbor, .075" Kerf, #D0748CFX

Metal Cutting

- Cermet II (Ceramic and Metallic) teeth deliver a more efficient and productive metal cutting solution through high heat tolerance and increased hardness for superior wear, fewer blade changes and up to 25x longer life.
- Up to 50x cooler cuts with a circular saw blade when compared to a grinding disc that increases temperature of steel by up to 500 degrees, enough to permanently discolor the steel.
- Up to 10x faster cuts with a circular saw blade for maximum productivity and efficiency, resulting in up to 60 seconds faster cuts in both metals and stainless steels vs. standard grinding discs.



10" x 40 Tooth General Purpose Saw Blade, 5/8" Arbor, .098" Kerf, #D1040A

12" x 44 Tooth General Purpose Saw Blade, 1" Arbor, .098" Kerf, #D1244X

General Purpose Wood Cutting

- TiCo™ Hi-Density carbide specifically designed for each application to increase performance.
- Perma-SHIELD® Non-stick Coating protects from heat, gumming and corrosion.
- Super thin laser cut kerf for fast, durable, and clean cuts.



12" x 80 Tooth Fine Finish Saw Blade, 1" Arbor, .0118" Kerf, #D1280X

Fine Finish Wood Cutting

- TiCo™ Hi-Density carbide specifically designed for each application to increase performance.
- Perma-SHIELD® Non-stick Coating protects from heat, gumming and corrosion.
- Super thin laser cut kerf for fast, durable and clean cuts.



12" x 96 Tooth Medium Aluminum Saw Blade, 1" Arbor, .091" Kerf, #D1296N

Medium Aluminum Cutting

- Tico™ Super-Density Micro-Grain Carbide for extreme cutting life and clog free cuts.
- Tri-Metal Shock Resistant Brazing for extreme impact and maximum durability.
- Triple Chip Grind (TCG) Tooth Geometry for maximum life, speed and durability, giving clean, burr-free cuts.

Jobber Length Drill Bits

High Speed Steel

- Ground Flute
- Black Oxide – 118° Point
- Cobalt – 135° Split Point

High Speed Steel!



Black Oxide



Cobalt

Size	Decimal	Flute Length	Overall Length	Black Oxide (Foreign)	Black Oxide (American)	Cobalt
1/8"	.1250	1-5/8"	2-3/4"	AJ.125	JL.125	AC.125
3/16"	.1875	2-5/16"	3-1/2"	AJ.187	JL.187	
1/4"	.2500	2-3/4"	4"	AJ.250	JL.250	AC.250
5/16"	.3125	3-3/16"	4-1/2"	AJ.312	JL.312	
3/8"	.3750	3-5/8"	5"	AJ.375	JL.375	AC.375
7/16"	.4375	4-1/16"	5-1/2"	AJ.437	JL.437	
1/2"	.5000	4-1/2"	6"	AJ.500	JL.500	

Silver & Deming Drill Bits

High Speed

- Use for drilling soft metal, wood or plastic.

High Speed Steel!



Standard

Size	Decimal	Shank Size	Overall Length	Drilling Depth	Standard
9/16"	.5625	1/2"	6"	3"	SD.562
5/8"	.6250	1/2"	6"	3"	SD.625
3/4"	.7500	1/2"	6"	3"	SD.750

Body Panel Drill Bits

Double Ended

- High Speed Steel
- 135° Split Point

High Speed Steel!



Size	Decimal	Part #
1/8"	.1250	DE.125

**If you don't see the drill bit you need,
CALL US
(847) 756-3807**

Glass Drill Bits

Masonry

- Quad-Carbide Tipped



Size	Part #
1/4"	GDQ.250
5/16"	GDQ.312
3/8"	GDQ.375
1/2"	GDQ.500
5/8"	GDQ.625



CHISELS AND RECIP SAW BLADES

Chisels



Item #	Description	Uses	Length	Shank	Size	Type
DMAMXCH1000	Scaling Chisel	Demolition & removal	12"	SDS Max	3"	Flat Chisel
DMAMXCH1190	Wide Chisel	Demolition & removal	14"	SDS Max	2"	Flat Chisel
DMAMXCH1030	Flat Chisel	Demolition & removal	12"	SDS Max	1"	Flat Chisel
DMAPLCH2010	Dual-Tooth Flat Chisel	Demolition & removal	10"	SDS Plus	.75"	Flat Chisel
DMAPLCH2000	Wide Chisel	Demolition & removal	10"	SDS Plus	1.5"	Flat Chisel
DMAPLCH2030	Point Chisel	Demolition & removal	10"	SDS Plus	.75"	Point Chisel
DMAPLCH2060	Floor Scraper	Removing flooring	11"	SDS Plus	5"x11"	Floor Scraper

Reciprocating Saw Blades



Bi-Metal Recip Blades for Nail-Embedded Wood

#DS0612BW5, 6" (5/pkg)
#DS0912BW200, 9" (200/pkg)
#DS1212BW5, 12" (5/pkg)

Nail-embedded Wood

- Perma-shield coating protects the blade from heat, gumming and corrosion.
- 1" Demolition body for straighter cuts with less vibration.
- Ultra hardened cutting edge for up to 5x longer life than standard blades.



Bi-Metal Recip Blade for Auto Dismantling

#DS0614WBF25, 6" (25/pkg)
#DS0914WBF200, 9" (200/pkg)

Medium Metals (1/6" to 5/16")

- Full Contact Arched Design provides more working teeth within the material for faster cuts in fewer passes resulting in less heat build-up to deliver 5x longer cutting performance.
- Dual Tooth design features a double tooth configuration with small gullets for faster material removal and extra durability.
- Perma-shield coating protects the blade from heat, gumming and corrosion.



STEEL DEMON Carbide Recip Blades for Thick Metal Cutting

#DS0908CF, 9" (1/pkg)

Thick Metals (3/16" to 9/16")

- High performance carbide for greater durability and cutting performance in metals with a thickness from 3/16" to 9/16".
- Enhanced carbide tip to blade connection for extreme impact resistance.
- 1" oversized blade body for straighter cuts with less vibration.

Speed Clean™ Dust Extraction Bits

Available
For SDS-plus®
And SDS-max®
Hammers



Rubber adapter connecting SDS-plus® Speed Clean™ (DXSPPLUS) or SDS-max® Speed Clean™ (DXSMAX) dust extraction bits to standard 35mm diameter vacuum hose.

SDS-plus®

- **Hollow drill bit** – connects to a vacuum system to deliver up to 50% time savings versus the conventional drill-blow-brush-blow anchor-installation method.
- **Faster drilling** – provides up to 25% greater drilling speed thanks to less dust and reduced friction.
- **Great durability** – one-piece design offers comparable life to Bosch Bulldog™ bits.
- **Part of a dust-reduction engineered solution** – included rubber adapter and bit work with a vacuum system to manage airborne silica dust.
- **Optimized for adhesive anchoring** – works with Simpson Strong-Tie® Set-XP® high-strength anchoring adhesive.

SDS-max®

- **Hollow drill bit** – connects to a vacuum system to deliver up to 50% time savings versus the conventional drill-blow-brush-blow anchor-installation method.
- **Faster drilling** – provides up to 25% greater drilling speed thanks to less dust and reduced friction.
- **Great durability** – one-piece design offers comparable life to Bosch SpeedX® bits.
- **Part of a dust-reduction engineered solution** – included rubber adapter and bit work with a vacuum system to manage airborne silica dust.
- **Optimized for adhesive anchoring** – works with Simpson Strong-Tie® Set-XP® high-strength anchoring adhesive.



Dust Solutions for:
Concrete Drilling
Demolition
Grinding
Cutting

SDS-plus® Item #	Diameter	Useable Length	Overall Length
DXS2104	5/8"	10"	15"
DXS2114	11/16"	12-1/2"	18"
DXS2124	3/4"	12-1/2"	18"
HCD2074	7/16"	7-1/2"	13"
HCD2084	1/2"	7-1/2"	13"
HCD2094	9/16"	10"	15"

SDS-max® Item #	Diameter	Useable Length	Overall Length
DXS5034	3/4"	12-1/2"	21"
DXS5044	7/8"	15"	25"
DXS5048	13/16"	15"	25"
DXS5054	1"	17-1/2"	27"
DXS5062	1-1/8"	20"	29"
DXS5082	1-3/8"	25"	35"

**LESS DUST
GET MORE DONE
NO HOLE CLEANING REQUIRED
EXTRACTS DUST WHILE DRILLING**

BRITE 30° FRAMING NAILS

- Reinforced round head design for better drive performance in the hardest materials.
- 10% more nails per strip means less reloading.
- Rigid and compact strips are more durable and easier to handle.

Diameter: .113 - .131 *Length:* **650238** 2-3/8" (Ring)
650830 3" (Smooth)
Shank Type: Smooth, Ring *Finish:* Brite



16 GAUGE STRAIGHT FINISH NAILS

Designed for better productivity and quality.

- Fewer misfires and jams.
- Chisel point reduces wood splitting.
- Smaller hole is ideal for most finish work.

Gauge: 16 Gauge Straight *Length:* **650282** 1-1/4"
650283 1-1/2"
650285 2"
650287 2-1/2"
Finish: Galvanized



18 GAUGE BRAD NAILS

- Smaller 18 gauge nail for premium workmanship.
- Galvanized for corrosion resistance.
- Chisel point reduces wood splitting.

Gauge: 18 Gauge Brad *Length:* **650213** 1-1/4"
650214 1-1/2"
650215 2"
Finish: Galvanized



7.4V LI-ION BATTERY

- For use in all Paslode Lithium-ion fuel powered cordless nailers:
 - Cordless Li-ion Framing Nailer
 - 16 Ga Angled or Straight Cordless Li-ion Finish Nailers
 - 18 Ga Cordless Li-ion Brad Nailer.
- Drives up to 9,000 nails per charge in Framing Nailers and 12,000 nails per charge in Trim Nailers.
- 2 Minute quick charge will drive up to 200 nails.
- Full charge in 90 minutes.

902654



CORDLESS NAILER LUBRICATION OIL

- Conditions and lubricates your Paslode Cordless tool for consistent tool performance.
- 4 oz. bottle.
- For use with all cordless tools.

401482



FRAMING FUEL

- Works in All Seasons down to 18°F with ALL Paslode Cordless Framing Nailers.
- No need for fuel cell warm-up.
- No need for double pumping.
- Includes 2 adapters.
- Easy loading fuel for convenient change outs.

816008



UNIVERSAL TRIM FUEL

- Easy to install, load and go.
- Premium grade fuel.
- Precise fuel dose for reliable drive performance.
- Works with ALL Paslode Cordless Finish Nailers.
- Includes two twist on external metering valve adapters.

816007





MARKING PAINT

CONSTRUCTION MARKING PAINT

The flagship of the upside-down marking paint line offering high-quality paint that is priced competitively to meet a variety of construction marking applications, while providing good color visibility and durability.

- Mark lasts up to 3 months.
- Meets standards set by OSHA and APWA/ONE Call Systems.

This quality inverted marking paint is packaged in a can that may only be operated in an upside-down position. It is formulated to meet a variety of marking applications while still providing good initial color visibility, good color retention, and adhesion.

Benefits: Provides great color durability for up to 3 months, depending on traffic and exposure. It meets standards set by OSHA and APWA/ONE Call Systems. It is not affected by moisture or water and it will not wash away once dry. Can be used with the cap on in Aervoe applicators #1244/1245. The spray-through cap eliminates accidental discharge. Each can is non-clogging and empties completely.

Uses: Designed to adhere to most surfaces, including pavement, gravel, and soil. It can be used for marking at construction sites, locator and utility identification, landscaping, or other general marking requirements. *It is not recommended for use on short-cut grass such as golf course greens.*

Container Size	Weight (Net)	Case Pack
20 oz.	15 oz.	12 cans



Available Colors



200 Clear Coat



247 Fl. Orange



249 Fl. Pink



254 Blue



255 White



256 Red



258 Hi-Vis Yellow



259 Green

CLEAR MARKING COAT

This durable, upside-down clear coating is used to seal and protect construction chalk lines and other temporary marks from wind, moisture, and traffic. It is packaged in a can that can only be operated in an upside-down position.

Benefits: Aervoe Clear Coat will protect and increase the colorfastness of all marking and striping paints and other painted coatings. Once dry, it is not affected by moisture or water and will not wash away.

Uses: It is designed to adhere to most surfaces, including pavement, gravel, and soil. It can be used to protect any chalk or temporary markings at construction sites or utility identification projects.

Container Size	Weight (Net)	Case Pack
20 oz.	15 oz.	12 cans





SEALANT / ADHESIVE / CAULK

HM270 Construction Silicone Sealant

HM270 is primarily used for structural or conventional type glazing and curtainwall sealing involving glass, plastic or metal. Also good for sealing skylights, solar panels, ventilators, aluminum siding and windows, heating/air conditioning units, duct work, recreational vehicles and other glass, plastic or metal assemblies.



Features

- For non-porous materials.
- Water-resistant & weatherproof.
- Permanently flexible, +/- 25% joint movement.
- Easy extrusion in any weather.

Size

- 10 fl. oz. (295ml)

Colors

- White (IDH 1493960)
- Clear (IDH 1494045)

Clean Up

- Mineral spirits



QB300 Multi-Purpose Construction Adhesive

QB300 is used with all types of vinyl covered gypsum board due to the excellent initial tack and rapid bond development. It provides excellent adhesion to a wide variety of building materials including wood, fiberboard, metals, masonry, brick, concrete, marble, cork, insulation hangers, polystyrene bath panels, fiberglass, FRP panels, glass, glazed surfaces and much more.



Features

- High initial grab; minimizes nailing.
- Interior / exterior application.
- Bridges minor gaps in framing.
- Will not stain, bleed or blister surfaces.
- Heat- & water-resistant.
- Use in fire-rated walls/partitions.

Sizes

- 28 fl. oz. (828ml) (IDH 827628)
- 5 gallon pail (IDH 827629)

Color

- Tan

Clean Up

- Mineral spirits

LOCTITE[®] PAINTER'S CAULK

Loctite Painter's Caulk is a quality latex sealant designed for interior applications. It is a 100% acrylic based caulk that seals out air, moisture, dirt and dust. Accepts minimal joint movement. Can be painted over with oil or acrylic paints within 1 hour. Soap and water clean-up.



Features

- Paintable and durable – Paintable within 1 hour.
- Mold & mildew resistant – Inhibits mold & mildew growth on caulk surface.
- Low odor – Ideal for interior applications in occupied structures.

Recommended For

- Bonds to wood, drywall, plaster, metals, brick, concrete, masonry, and painted surfaces.
- Painter's Caulk is designed for interior use to seal cracks and gaps that are found around doors, baseboards and walls, molding, windows, and wall joints. It can also be used for less-demanding outdoor projects.

Size

- 10 fl. oz. (295ml)

Color

- White (when dry)

Clean Up

- Uncured adhesive cleans up easily with soap and water. Cured sealant may be carefully cut away with a sharp-edged tool.

Quartz

Full Brim – 4 Point Suspension

- Pillowed brow pad.
- Nylon crown strap suspensions.
- Vertical height adjustment.
- Quick ratchet adjustment system.
- Easy pinlock adjustment system.
- High density polyethylene construction.
- Meet ANSI Z89.1-2009 Type 1 – Class G & E standards.



QHR4-BLUE



QHR4-GRAY



QHR4-GREEN



QHR4-ORANGE



QHR4-RED



QHR4-WHITE



QHR4-YELLOW



QHR4-GREEN
HI-VIZ



QHR4-ORANGE
HI-VIZ

Granite

Cap Style – 4 Point Suspension

- Pillowed brow pad.
- Nylon crown strap suspensions.
- Vertical height adjustment.
- Quick ratchet adjustment system.
- Easy pinlock adjustment system.
- High density polyethylene construction.
- Universal accessory slots.
- Meet ANSI Z89.1-2009 Type 1 – Class G & E standards.



GHR4-BLUE



GHR4-GRAY



GHR4-GREEN



GHR4-ORANGE



GHR4-RED



GHR4-WHITE



GHR4-YELLOW



GHR4-GREEN
HI-VIZ



GHR4-ORANGE
HI-VIZ

Rad-Sequel™

Radians Rad-Sequel™ safety glasses have a lightweight design which provides a comfortable fit. Rubber tipped temples and a soft rubber nosepiece give this glass a secure fit for all day wear.

- Rubber tipped temples provide a secure fit.
- Lightweight design for a comfortable fit.
- Soft, rubber nosepiece provides all day comfort.
- Polycarbonate lens provides impact resistance.
- Protective lens provides 99.9% UVA/UVB protection.
- Safety Glasses meet ANSI Z87.1+ standards.

**Rubber Tipped Temples
Rubber Nosepiece**



RS1-20 - Smoke



RS1-90 - Indoor/Outdoor



RS1-B - Light Blue



RS1-11 - Clear Anti-Fog

blade

Crossfire Blade Performance Safety Eyewear

The Crossfire Blade weighs in at less than .5 ounce and is easy to wear all day long. Designed as a shooting glass for sports and military, it is superior in construction and diverse in application.

- Vented rubber nosepiece for breathability.
- One-piece, frameless lens for greater coverage.
- Hard coat polycarbonate lens protects against scratches.
- Provides 99.9% UVA and UVB protection.
- Complies with ANSI Z87.1 standards.



3025 AF - Yellow anti-fog lens, black temples

C2™

The Radians C-2™ Bi-Focal safety glass has a magnification diopter molded into the lens to combine a protective safety glass with reading glasses.

- Magnification diopter.
- Stylish translucent frame.
- Soft, rubber nosepiece.
- Cushioned, non-slip rubber temple pads provide superior comfort.
- Polycarbonate protective safety lens provides impact resistance.
- Provides 99.9% UVA and UVB protection.
- Meets ANSI Z87.1 standards.
- Available in clear and smoke lens colors.



C2-115 - Clear 1.5
C2-120 - Clear 2.0



C2-215 - Smoke 1.5
C2-220 - Smoke 2.0

Bi-Focal

UNIVERSAL FLEX SIDESHIELD™

SideShields are a quick and inexpensive way of supplying additional protection to visitors and employees wearing personal prescription eyewear. Flexible sideshields are engineered to fit all types of eyewear by easily attaching to temples and fronts.

- Easy-on, easy-off; weaves through the temple.
- No parts or tools required.
- Blocks 100% of UV rays.
- Molded of soft, bendable vinyl .075.
- Absorbs the energy of impact.
- Allows temples to fold correctly.
- Conforms to ANSI Z87.1 standards.



Made in USA

99705 - Universal Flex SideShields

LENS CLEANING

Lens Cleaning Towelettes

- Cleans polycarbonate, glass and plastic lenses.
- Prevents fogging.
- Reduces static.
- Low lint, non abrasive towelette.
- 100 Count.

LCD100



Respirator Wipes

- Pre-moistened.
- Individually packaged.
- For use on respirators and other PPE.
- 100 Count.

RW-100



SV2Z

- Zipper closure.
- 2" Silver tape reflective material.
- 1 Horizontal stripe.

Pockets

- 1 Upper left front chest pocket.
- 1 Lower right inside pocket.

Materials

- 100% Polyester solid knit.
- 100% Polyester mesh.

Colors

- High-visibility green.
- High-visibility orange.

Sizes

- S, M, L, XL, 2X, 3X, 4X, 5X.

SOLID		MESH	
GREEN	ORANGE	GREEN	ORANGE
SV2ZGSS	SV2ZOSS	SV2ZGMS	SV2ZOMS
SV2ZGSM	SV2ZOSM	SV2ZGMM	SV2ZOMM
SV2ZGSL	SV2ZOSL	SV2ZGML	SV2ZOML
SV2ZGSXL	SV2ZOSXL	SV2ZGMXL	SV2ZOMXL
SV2ZGS2X	SV2ZOS2X	SV2ZGM2X	SV2ZOM2X
SV2ZGS3X	SV2ZOS3X	SV2ZGM3X	SV2ZOM3X
SV2ZGS4X	SV2ZOS4X	SV2ZGM4X	SV2ZOM4X
SV2ZGS5X	SV2ZOS5X	SV2ZGM5X	SV2ZOM5X

25 Wash Max

Economy Safety Vest with Zipper Closure TYPE R / CLASS 2, ANSI/ISEA 107-2015



SV22-2

- Zipper closure.
- 2" Silver tape reflective material.
- 1 Horizontal stripe.

Pockets

- 1 Upper left front chest pocket.
- 1 Lower right inside pocket.

Materials

- 100% Polyester mesh.

Colors

- High-visibility green.

Sizes

- S, M, L, XL, 2X, 3X, 4X, 5X.

MESH
GREEN
SV22-2ZGMS
SV22-2ZGMM
SV22-2ZGML
SV22-2ZGMXL
SV22-2ZGM2X
SV22-2ZGM3X
SV22-2ZGM4X
SV22-2ZGM5X

25 Wash Max

Economy Safety Vest with Two-Tone Trim TYPE R / CLASS 2, ANSI/ISEA 107-2015



SV55

- Heavy-duty #8 zipper closure.
- 3M® 8712 2" silver glass bead reflective tape.
- 1" Contrasting trim detail.
- Reflective trim edging / Dual mic tabs.

Pockets

- 1ea Chest pocket outside.
- 1ea Split chest pocket outside.
- 2ea Lower front pockets.
- 2ea Split layer tablet inside pockets (4 total).
- 1ea Upper inside chest pocket.
- 1ea Rear plan pocket / 2ea Spray can pockets.

Materials

- Front: 300D woven polyester.
- Back: Polyester mesh.

SOLID FRONT & MESH BACK	
GREEN	ORANGE
SV55-2ZGD-M	SV55-2ZOD-M
SV55-2ZGD-L	SV55-2ZOD-L
SV55-2ZGD-XL	SV55-2ZOD-XL
SV55-2ZGD-2X	SV55-2ZOD-2X
SV55-2ZGD-3X	SV55-2ZOD-3X
SV55-2ZGD-4X	SV55-2ZOD-4X
SV55-2ZGD-5X	SV55-2ZOD-5X

25 Wash Max

Sizes

- M, L, XL, 2X, 3X, 4X, 5X.

Heavy Woven Two-Tone Engineer Vest TYPE R / CLASS 2, ANSI/ISEA 107-2015



V-Line Construction Harness

The V-Line Harness is the dynamic solution for essential fall protection needs. The lightweight, streamlined design optimizes mobility and comfort.

Features

- Dorsal D-ring.
- Front D-ring.
- Side positioning D-rings.
- Friction buckle torso adjusters.
- Mating buckle chest.
- Tongue buckle legs.
- Shoulder pad.
- Floating waist pad.

Attachment Points

- 1 dorsal D-ring
- 1 front D-ring
- 2 side positioning D-rings

Item Weight

- 5.2 lbs. (2.4kg)

User Weight Capacity

- ANSI: 130-310 lbs. (59-141kg)
- OSHA: Up to 420 lbs. (191kg)

Standard Compliant With

- ANSI: Z359.11-2021
- OSHA: 1926.502, 1910.140

Material Specifications

- Webbing: Polyester
- D-rings(s): Zinc plated alloy steel
- Adjuster buckles: Zinc plated alloy steel
- Chest connection: Zinc plated alloy steel
- Leg connection: Steel tongue buckle w/ SS grommets
- Pads: Polyester mesh; EVA
- Belt: Polyester; Steel; Stainless steel

Sizes

- **FS99160-EFD-L:** Large / **FS99160-EFD-XL:** X-Large



HARNESS SIZING CHART

Height - Ft./In. (m)										
	180 (82)	200 (91)	220 (100)	240 (109)	260 (118)	280 (127)	300 (136)	320 (145)	340 (154)	
6'6" (1.98)										XL
6'4" (1.93)										L
6'2" (1.88)										
6" (1.83)										
5'10" (1.78)										
5'8" (1.68)										
5'6" (1.68)										
5'4" (1.63)										
5'2" (1.85)										
5' (1.52)										



Northstar Classic Cable SRLs, 15' & 30'

The Northstar Classic Cable Self Retracting Lifelines are designed with specialized impact resistant housing and non-corrosive components. This durable SRL also features an enhanced swivel top for greater mobility, load indicating snap hook and fast-acting braking system.

Features

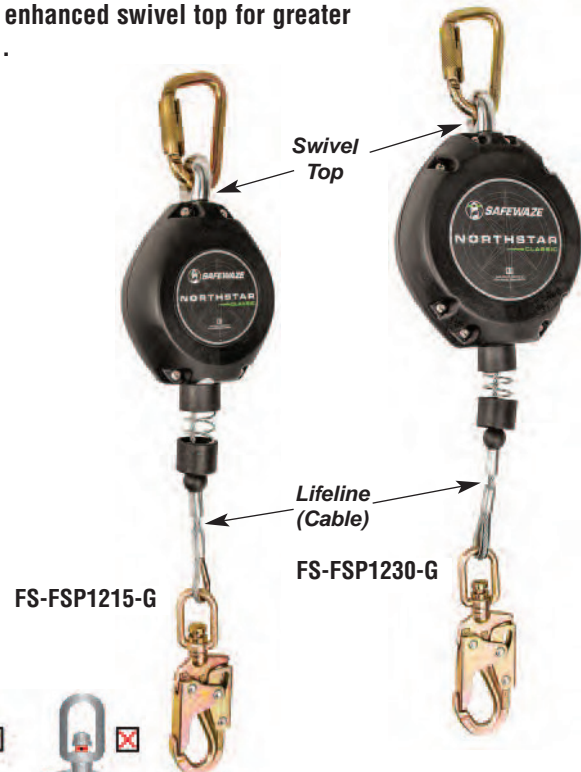
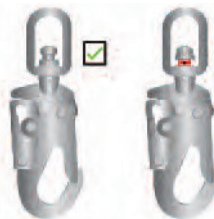
- Swivel attachment point offers wide range of motion.
- High strength polymer housing resists impact.
- Braking system activates quickly to arrest fall.
- Load indicating snap hook easily identifies when product has arrested a fall.
- Non-corrosive components include steel carabiner attachment and LI snap hook.

Specifications

- **Class A SRL**
- Materials: Steel carabiner, polymer housing, 3/16" galvanized steel cable, steel snap hook
- **FS-FSP1215-G**
Weight: 6.3 lbs. (2.9kg), Length: 15' (4.57m)
- **FS-FSP1230-G**
Weight: 9 lbs. (4.1kg), Length: 30' (13.6m)
- ANSI Weight Capacity: 130-310 lbs. (59-141kg)
- OSHA Weight Capacity: Up to 420 lbs. (191kg)
- ANSI Standards: Z359.14, A10.32
- OSHA Standards: 1926.502

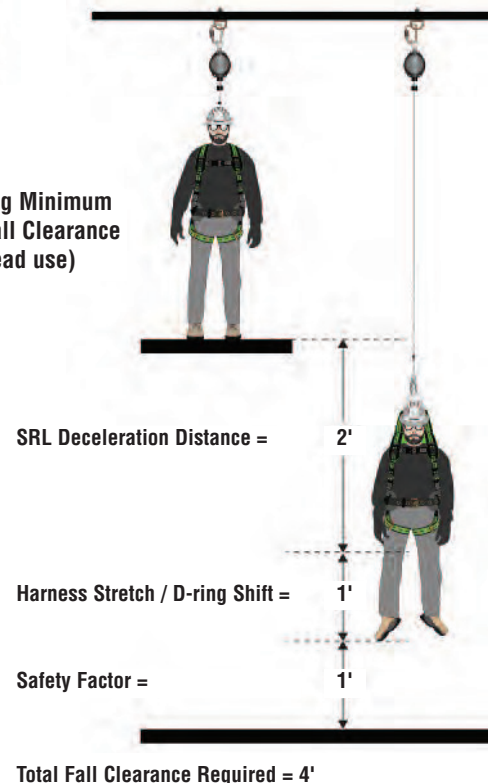
Safewaze SRLs are part of a complete PFAS. Every user must be trained in inspection, installation, operation and proper usage. Instruction Manual can be found at www.safewaze.com

Always inspect the Swivel Fall Snap Hook



Only a Full Body Harness (FBH) may be used with this equipment. The Full Body Harness must connect to the SRL via the dorsal D-ring. Safewaze SRLs are not rated for use with a body belt. Use of Safewaze SRLs with a body belt may result in injury.

Determining Minimum Required Fall Clearance (overhead use)



Northstar Classic LE 30' Cable SRL

The Northstar Classic Cable Self Retracting Lifeline is designed with specialized impact resistant housing and non-corrosive components. This durable leading edge SRL also features an enhanced swivel top for greater mobility, swivel carabiner and fast-acting braking system.

Features

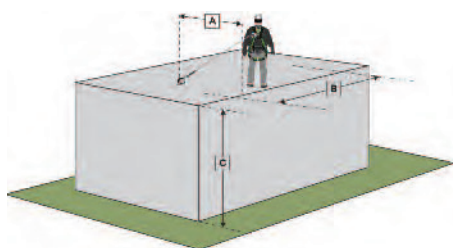
- External energy absorber for leading edge use.
- Swivel attachment point offers wide range of motion.
- High strength polymer housing resists impact.
- Braking system activates quickly to arrest fall.
- Shock pack easily identifies when product has arrested a fall.

Specifications

• Class A SRL

- Materials: Steel carabiner, polymer housing, 3/16" galvanized steel cable, aluminum swivel carabiner
- Weight: 13.7 lbs. (6.2kg), Length: 30' (9.2m)
- ANSI Weight Capacity: 130-310 lbs. (59-141kg) / OSHA Weight Capacity: Up to 420 lbs. (191kg)
- ANSI Standards: Z359.14, A10.32 / OSHA Standards: 1926.502

Leading Edge Fall Clearance

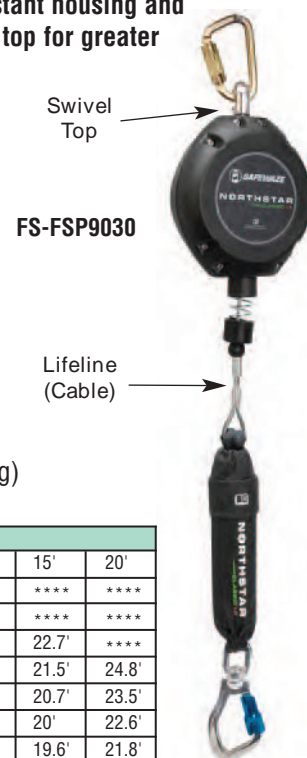


(Max. Free Fall - 5 ft.)

A = Setback distance
B = Working distance along edge
C = Clearance required
**** (indicates distance along edge is outside safe work radius for setback distance)

Where A and B intersect within the chart is C (clearance distance).

		B					
		0'	2'	5'	10'	15'	20'
A	5'	16.5'	16.9'	18.6'	****	****	****
	10'	16.5'	16.7'	17.7'	20.6'	****	****
	15'	16.5'	16.6'	17.3'	19.5'	22.7'	****
	20'	16.5'	16.6'	17.1'	18.9'	21.5'	24.8'
	25'	16.5'	16.6'	17'	18.4'	20.7'	23.5'
	30'	16.5'	16.6'	16.9'	18.1'	20'	22.6'
	35'	16.5'	16.6'	16.9'	17.9'	19.6'	21.8'
	40'	16.5'	16.5'	16.8'	17.7'	19.2'	21.2'
	50'	16.5'	16.5'	16.7'	17.5'	18.7'	20.4'
		C					



Latitude HD 7' Single Web SRL: Carabiner, Snap Hook

The Latitude HD 7' Single Web Self Retracting Lifeline features superior durability with heavy-duty housing and high-strength webbing. An innovative internal braking system eases shock and minimizes arrest distance, perfect for use in low clearance.

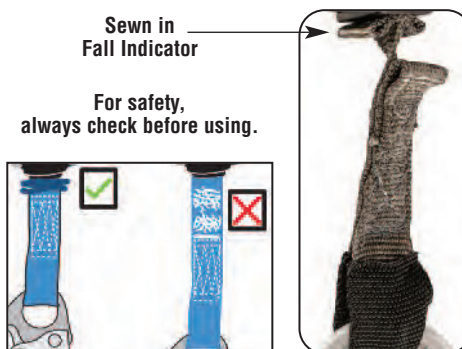
Features

- Reliable internal braking system eliminates need for external shock pack.
- Durable housing and premium webbing increase strength and longevity.
- 360/180° attachment point offers full range of motion.

Specifications

• Class A SRL

- Materials: Steel carabiner, aluminum housing, 25mm UHMPE webbing, steel rebar hook
- Weight: 3.8 lbs. (1.7kg), Length: 7' (2.1m)
- ANSI Weight Capacity: 130-310 lbs. (59-141kg)
- OSHA Weight Capacity: Up to 420 lbs. (191kg)
- ANSI Standards: Z359.14, A10.32
- OSHA Standards: 1926.502
- Hook Ratings:
5,000 lbs. (2267.96kg) Tensile Strength
3,600 lbs. (1632.93kg) Gate Rated
- Max. Arresting Force: <1,800 lbs. (816.47kg)
- Max. Arresting Distance: <24 in. (609.6mm)



Safewaze SRLs are part of a complete PFAS. Every user must be trained in inspection, installation, operation and proper usage. Instruction Manual can be found at www.safewaze.com

4' Concrete Anchor Strap

A simple and disposable anchor solution. This lightweight and economical design is equipped with a high strength D-ring.

Features

- Constructed with heavy-duty webbing with wearpad.
- D-ring connection point.
- Loop attachment end slips over rebar for easy installation.

Specifications

- Attachment points: 1 D-ring, 1 soft-eye loop
- Materials: 1.75" polyester webbing, 24" wear sleeve, forged steel D-ring
- Length: 4'
- Min. breaking strength: 5,000 lbs.

FS880



5K Removable Concrete Hole Anchor

Exclusive product providing instant user mobility and quick anchor removal. Anchor can be set without fear of getting stuck.

Features

- Removable and reusable.
- Easy trigger provides quick, repeated use.
- 3/4"x 3" drilled hole required for installation.

Specifications

- Materials: Steel body, stainless steel cable slider, forged steel eye
- Weight: 0.8 lbs.
- Length: 10.75"
- Diameter: 3.0" outside diameter; 2.2" inside diameter eye
- Min. breaking strength: 5,000 lbs.

FS876



26" Chain Assembly: Adjustable, Swivel Rebar Hook

A flexible, adjustable method to position a user in a full-body harness for work positioning applications. Ideal for use on rebar or concrete structures.

Features

- Adjustable 26" chain assembly.
- 1 forged swivel rebar hook.
- 2 forged steel snap hooks.

Specifications

- Attachment Points: 1 rebar hook, 2 snap hooks
- Weight: 4.4 lbs.
- Length: 26" chain
- Min. breaking strength: 5,000 lbs.

FS060



Reinforced Cross Arm Strap

Highly adaptable mobile anchor point solution. This reusable anchor is built with forged steel D-rings and highly durable webbing.

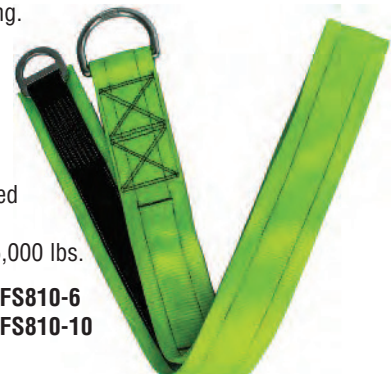
Features

- Lightweight and portable, easy install.
- Heavyweight strap webbing.
- Abrasion resistant sling webbing wear pad.
- Two lengths: 6' and 10'.

Specifications

- Materials: Polyester webbing, forged zinc-plated steel D-rings
- Min. breaking strength: 5,000 lbs.

FS810-6
FS810-10



18" D-ring Extender; Snap Hook, D-ring

Provides additional length between the harness dorsal D-ring and connection to another component of the fall arrest system. Includes convenient snap hook and opposite D-ring for quick, easy connection.

Features

- 18" length.
- 1 forged steel snap hook.
- 1 forged steel D-ring.

Specifications

- Materials: Polyester webbing; zinc plated alloy steel snap hook, D-ring
- Attachment Points: 1 snap hook, 1 D-ring
- Weight: 1.3 lbs.
- Length: 18"
- Min. breaking strength: 5,000 lbs.

FS813



Reusable Roof Anchor

Ideal for temporary use on wood or metal roofs. The anchor hinge design allows it to be screwed or nailed in position on roofs ranging from flat to sheer.

Features

- Installed on peak or flat wood and metal decking roofs.
- Hinged construction for adjustment to different angles.
- Corrosion resistant plated steel.
- Large D-ring connection point.
- Fasteners not included.

Specifications

- Materials: Zinc-plated steel
- Weight: 2.4 lbs.
- Length: 11"
- Min. breaking strength: 5,000 lbs.

FS870



Radians LOW SET™ BTH™ Earmuff

Features

- Has a behind the head wire band that eliminates interference while wearing a hat.
- Can be combined with earplugs for maximum hearing protection.
- NRR 19 dB.



FP31 - Corded Disposable Foam Plugs

Features

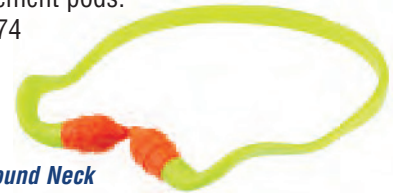
- Comfortable wing shape for virtually any ear canal.
- Extremely soft foam plug, low-pressure fit.
- PVC dielectric cord.
- Meets ANSI S3.19-1974 standards.
- NRR 32 dB.



RB2120 - Banded Earplugs

Features

- Soft, ergonomic pods and lightweight, curved band.
- High density construction, lightweight and very durable.
- Includes 1 pair replacement pods.
- Meets ANSI S3.19-1974 standards.
- NRR 25 dB.
- Made in the USA.



Traffic Cones - Black Base

- Flexible yet rugged and durable.
- High visibility.
- 28-Inch height.



Retractable Cone Bars

- Ultra lightweight plastic.
- Expands from 6' to 10'.
- Ring diameter: 3-1/3".
- Reusable.
- Highly reflective at night.
- Instant barrier in seconds.
- Use for: Hazardous areas, utility road work, construction sites, parking lots, controlled areas, crosswalks and pedestrian walkways.



Rebar Caps



Impalement Safety Covers

Deslauriers' Caps are steel reinforced and conform to State and Federal safety regulations.

DISC-10 fits rebar sizes #3 thru #7.



- Approved by California OSHA #C1718AG and OSHA 1723AG.
- Complies with Federal OSHA 701 (b).
- Federal OSHA has ruled that if cover is in compliance with Cal OSHA, then it conforms to Fed. 701 (b).

- Made of engineered high-impact plastic.
- 16 square inches top surface area aids in protection.
- Self-centering formed steel insert seats cover perpendicular to rebar.

Tremie Hopper

- Molded of durable heavy gauge polyethylene plastic.
- Standard unit is steel reinforced for added strength during transport and/or positioning at jobsite.
- Standard 8" discharge opening which can be easily cut to a 12" discharge opening.
- Large - 36" square.
- Easy to clean.



TRE-HOPPER

Tremie Collar

- Connect elephant trunk to hopper via tremie collar.
- 12-Inch diameter.
- Steel chains included.



TRE-COLLAR-12

Tremie Elephant Trunk

- Made of heavy-duty vinyl.
- 12-Inch diameter.
- 50-Foot rolls.

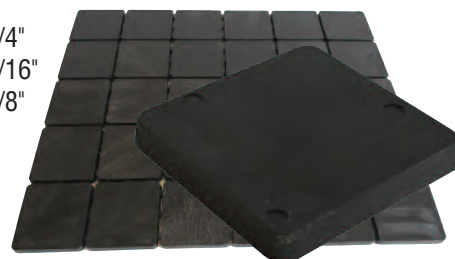


TRE-ET12

Vers-A-Shim® Shim Strips

- Assures accurate placement and leveling of block, brick, precast panels and tilt-up walls including structural and architectural components.
- Less expensive and more versatile than steel.
- Will not rust, rot, stain or leach concrete.

PC2214 - 2"x2" 1/4"
PC2216 - 2"x2" 1/16"
PC2218 - 2"x2" 1/8"



Nominal Lumber

2x4s

2x6s

2x8s

4x4s

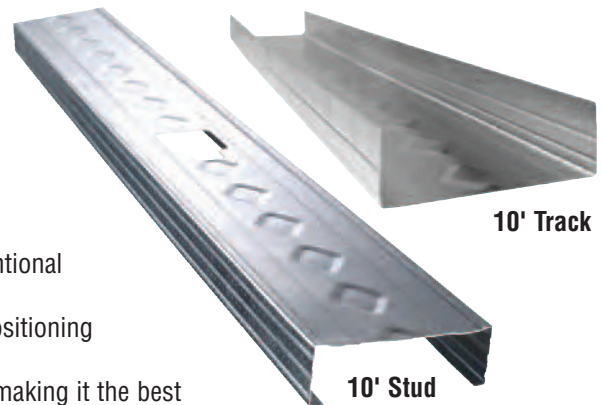
4x6s

- Pine lumber.
- Workhorse of industry.
- Kiln-dried for stability.
- Interior/exterior use.



Steel Drywall Studs and Track

- 20 Gauge steel combined with low-profile flange stiffening grooves and double offset web planking increase strength and provide greater limiting heights.
- Diamond-embossed web creates stiffness, reducing flange fade and screw spinout during drywall installation.
- Strong, lightweight stud and track cut and handle easier than conventional flat steel studs.
- Flange grooves provide sight line for drywall alignment and aid in positioning screws at drywall joints to maintain the 3/8" edge requirement.
- Web and leg enhancements in track provide straight and rigid legs, making it the best choice for framing walls, headers, soffits and bulkheads.



USG Sheetrock® Brand Lightweight 4x8 Drywall Panels



ULTRALIGHT

Lightweight 1/2" wall & ceiling panels for interior applications

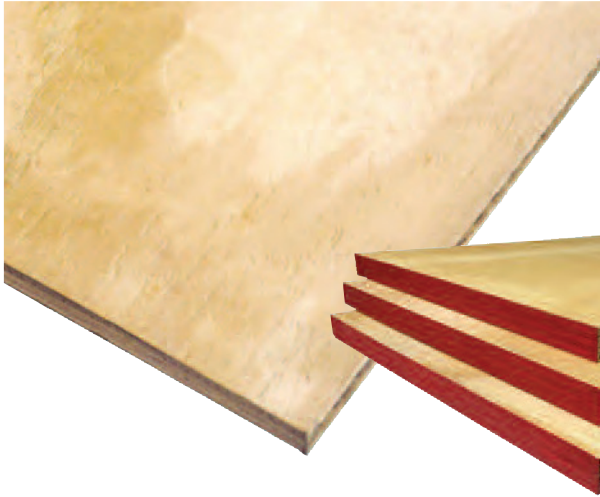
- Superior score and snap for cleaner edge and faster installation.
- International Code Council® (ICC®) Evaluation Service compliant for ceiling installations, ESR-3365.
- Comply with ASTM C1396 specification for 1/2" gypsum wallboard and 1/2" gypsum ceiling board.

ULTRALIGHT FIRECODE® X

5/8" Type X wall & ceiling gypsum panels for interior applications

- UL listed for use in fire-rated partitions when installed either vertically or horizontally with aligned tapered edges on standard and equivalent UL-approved 25-gauge studs (per UL Design U419).
- UL Classification as to fire resistance, surface-burning characteristics and noncombustibility.
- Comply with ASTM C1396 specification for 5/8" Type X gypsum wallboard.
- Offer comparable sound, strength, sag and impact resistance to standard 5/8" Type X.

CDX Pine Plywood



- Meets high quality grading standards.
- Wide variety of commercial, residential or industrial uses.
- Can be primed, stained or painted.
- For use in above ground applications.
- Uniform thickness.
- Available in 1/2" and 3/4", 4x8 sheets.

BB OES Plywood

- Economical concrete forming plywood.
- Raw B-grade face and back, oiled and edge-sealed.
- Seal on edge resists water absorption.
- Southern yellow pine.
- Prominent wood grain.
- Available in 3/4", 4x8 sheets.

CDX Fire-Rated Pressure-Treated Plywood



- Interior fire retardant plywood can be used for roof as well as wall structures.
- Decay and termite resistant.
- Classified as a Type A fire retardant product.
- Can be used in commercial and residential projects.
- Treated with fire retardant for interior use only.
- Even when sprinklers are mandatory, the use of interior fire treated plywood can further reduce fire insurance rates.
- Available in 1/2" and 3/4", 4x8 sheets.

CDX Fire-Rated Pressure-Treated Plywood with Kerf

Fire treated backing is used for attaching anything to a wall that needs more than a drywall anchor to hold it in place. It is a sturdier way to attach items to walls. The notch lines up with the inside of a steel stud so the backing can be screwed into the stud. The backing itself is the same length as the space between studs.

Size: 3/4", 6" (including kerf) x 16".



Fire Retardant Treated Nominal Lumber



- Chemically treated to remain stable in high temperatures.
- Reacts automatically when exposed to fire.
- Suited for nearly all interior applications and areas shielded from precipitation.
- Available sizes: 2x4x8
2x4x16





TARPS & DEBRIS NETTING

HEAVY-DUTY FR TARPS



Product Features

- Fire Retardant: Meets NFPA 701 Method II and the Boston Fire Marshal Test BFD IX-1.
- High density white woven polyethylene (HDPE).
- Strong 10 x 10 weave, 10 mil thickness.
- Rust-proof grommets.
- 2" Reinforced hem.
- Sewn corner patches for added strength in hem.
- Grommets added around perimeter and on internal seams.
- Rip-resistant fabric.
- Easy to install, secure and remove.

Product Uses

- Construction or scaffold tarp.
- Abatement, demolition and restoration tarp.
- Wind, rain and snow protection.
- Temporary heat enclosure.
- Debris and dust containment.
- Ideal for high rise, bridge and tall structure rehabilitation or construction.
- Suitable for moderate wind conditions.

Availability	
Sizes	# Per Carton
10' x 20'	10
15' x 20'	5
16' x 20' (Finished Size)	5
20' x 21' (Finished Size)	4
20' x 30'	2



SBN-22 SAFETY DEBRIS NETTING



1/4" Mesh openings

Availability
Sizes
4' x 150'
5'6" x 150'
8'6" x 150'
10'6" x 150'
12' x 150'

Product Features

- Fire Retardant: Meets NFPA 701 Method II and the Boston Fire Marshal Test BFD IX-1.
- Knitted high density polyethylene (HDPE).
- Economical and cost-effective.
- Lightweight, UV-treated and long lasting.
- Edges are hemmed and reinforced for easy installation.
- Short-term guardrail and floor to floor netting.

Product Uses

- Construction and jobsite protection.
- Contains debris, dust and other jobsite materials.
- Worker and pedestrian safety / short-term guardrail.
- Scaffold netting and enclosure.
- Industrial, plant and refinery maintenance.



SWEEPING COMPOUND



About Kleen Sweep™

Kleen Sweep™ is a non-petroleum based sweeping compound with enhanced moisture retention and absorption.*

Kleen Sweep™ is a unique patented product that provides improved performance over ordinary sweeping compounds. Kleen Sweep contains no oils of any kind (petroleum distillates or other oils). It provides superior cleaning and dirt suppressing properties. It is environmentally safe – contains no hazardous materials.

Kleen Sweep™ is a blend of special cleaning and dust control agents that efficiently and effectively control dust and clean all surfaces without leaving any oily residue.

Kleen Sweep™ is safer than oil based products in the following ways:

- Storage – No potential spontaneous combustion
- Handling
- No surface staining
- Safe disposal.**

Uses

Because the product contains no oil, **Kleen Sweep™** can be used on most hard surface floors. It is excellent for:

- Shop and warehouse floors
- Garage and basement floors
- All other sweeping jobs.

Packaging

#1815 – 50 lb. Corrugated Box

#1818 – 300 lb. Drum

Coverage

Suggested application rate is 1 pound per 15 sq. ft. (50 pounds covers 750 sq. ft.)

Storage

Keep bag tightly closed between use to retain product moisture. Should product dry out, add water to return to original product state.

Disposal

Kleen Sweep™ and most floor contaminants such as dust and dirt can be safely disposed in regular waste streams.

Kleen Sweep™ passed Minnesota standards for disposal in landfill sites and has no known restrictions in other states.



Application Method 1

Spread **Kleen Sweep™** sparingly over entire area to be cleaned, sweep with a push broom (applying slight downward pressure) within one hour of application on concrete surfaces, 15 min. on all other hard surface floors.

Application Method 2

Generously spread **Kleen Sweep™** along a line at one end of area to be cleaned and sweep with a push broom (applying slight downward pressure) within one hour of application on concrete surfaces, 15 min. on all other hard surface floors.

* Patented

** If Kleen Sweep is used to pick up hazardous materials, it is the user's responsibility to safely dispose of those materials in accordance with federal, state and local regulations.

AHD-00 – Flush Universal Access Door with Exposed Flange

Designed for quick and easy installation on non-rated walls and ceilings made of any type of materials.

- **Material:** 16-gauge cold rolled steel.
- **Hinge:** Hot-rolled and stamped steel pin type hinge, located on the second dimension (height).
- **Locking mechanism:** Screwdriver-operated cam latch in cold rolled steel.
- **Outer frame:** 1" exposed frame.
- **Inner frame:** 1½" deep.
- **Opening in the wall:** Door dimensions + ¼" or + 6mm.
- **Finish:** High quality white powder coat primer.
- **Sizes:** 6x6, 8x8, 8x12, 10x10, 12x12, 12x16, 12x18, 12x24, 14x14, 16x16, 18x18, 18x24, 20x20, 22x22, 24x24

(All dimensions are written in the following order: Width x Height)



PFI-00 – Fire-Rated Insulated Access Door with Exposed Flange

The fire-rated insulated access door can be installed on fire-rated walls and ceilings.

- **Material:** 20-gauge Galvaneel steel for the door, 16-gauge cold rolled steel for the frame.
 - **Hinge:** Continuous type piano hinge, located on the second dimension (height).
 - **Locking mechanism:** Ring/tool key-operated slam latch, both included.
 - **Outer frame:** 1" exposed frame, made of cold rolled steel.
 - **Inner frame:** 2½" deep, made of cold rolled steel.
 - **Opening in the wall:** Door dimensions + ¼" or + 6mm.
 - **Insulation:** 2" fire-rated mineral wool.
 - **Interior door opener:** Mechanisms allowing the panels to be opened from the inside, standard for all fire-rated doors over 12" x 12".
 - **Finish:** High quality white powder coat primer.
 - **Sizes:** 8x8, 10x10, 12x12, 14x14, 16x16, 18x18, 22x22, 22x30, 22x36, 24x24, 24x36, 24x48, 30x30, 32x32, 36x36, 48x48
- (Dimensions larger than 24" X 36" are not Fire-rated approved for ceiling installation. All dimensions are written in the following order: Width x Height)*



Fire-rated access doors for vertical use are subject to the following conditions:

- **Wall installation:** Approved access doors, installed vertically
- **Certificates:** UL 10B (2009), NFPA 252 (2012), CAN/ULC S104 (2010)
- **Approval:** 3 hours neutral/negative pressure
- **Maximum dimension:** 48" x 48" (1219mm x 1219mm) or 2304 sq. ft., plus or minus 3" (76mm) tolerance in height and width provided that the maximum area does not exceed 2304 sq. ft.
- **Temperature rise:** 250°F (121°C) after 30 minutes and 450°F (232°C) after 60 minutes.

Fire-rated access doors for horizontal use are subject to the following conditions:

- **Ceiling installation:** Approved access doors, installed horizontally
- **Certificates:** ASTM E119 (2012), CAN/ULC S101 (2007)
- **Approval:** 3 hours for non-combustible assembly and 1 hour for combustible assembly
- **Maximum dimension:** 24" x 36" (610mm x 914mm) (hinges and latches on the 36" side), plus or minus 3" (76mm) of dimensional tolerance provided that the maximum area does not exceed 864 sq. ft.
- **Temperature rise:** Within limits established by ASTM E119 and CAN/ULC S101.

STAINLESS STEEL INTER-LOK ANGLE FRAME – PLATE GLASS MIRROR



0600 Series

- 3/4" x 5/8" (19x16mm) roll formed 18 gauge type 304 stainless steel angle has corners heliarc welded, ground and polished smooth to a uniform satin finish.
- Mirror is installed on a concealed hanging bracket that locks onto top and bottom of frame by tamper-proof set screws.
- Back plate is one piece, attached to frame with theft-resistant locking device.

Item #	Size	Item #	Size
0600-1620	16"w x 20"h (406 x 508mm)	0600-2448	24"w x 48"h (610 x 1219mm)
0600-1624	16"w x 24"h (406 x 610mm)	0600-2460	24"w x 60"h (610 x 1524mm)
0600-1630	16"w x 30"h (406 x 762mm)	0600-2472	24"w x 72"h (610 x 1829mm)
0600-1824	18"w x 24"h (457 x 610mm)	0600-3036	30"w x 36"h (610 x 914mm)
0600-1830	18"w x 30"h (457 x 762mm)	0600-3636	36"w x 36"h (914 x 914mm)
0600-1836	18"w x 36"h (457 x 914mm)	0600-4830	48"w x 30"h (1219 x 762mm)
0600-2060	20"w x 60"h (508 x 1524mm)	0600-4836	48"w x 36"h (1219 x 914mm)
0600-2430	24"w x 30"h (610 x 762mm)	0600-6024	60"w x 24"h (1524 x 610mm)
0600-2436	24"w x 36"h (610 x 914mm)	0600-6036	60"w x 36"h (1524 x 914mm)
0600-2442	24"w x 42"h (610 x 1067mm)	0600-7236	72"w x 36"h (1829 x 914mm)

PAPER TOWEL DISPENSER AND WASTE RECEPTACLE – RECESSED



0462-AD

- Dispenses 350 C-fold or 475 multi-fold paper towels.
- 2 gal. (7.6 L) waste receptacle.
- Overall Dimensions: 14-1/4" x 28" x 4-1/4"
- Wall Opening: 12-3/4" x 26-1/2" x 4"

1-1/4" DIA GRAB BARS – EXPOSED MOUNT

3400 Series

- 3" (76mm) diameter flange.
- 1/8" (3mm) thick type 304 stainless steel with satin finish.
- Exposed mounting screw holes are drilled and countersunk.



SOAP DISPENSER (LIQUID) HORIZONTAL – RECESSED



0326

- Stainless steel with satin finish.
- 57 fl. oz. (1.7 L) capacity of liquid, lotion or detergent soap.
- Stem-type, push-button valve.
- Overall Dimensions: 10-1/4" x 6" x 4-1/2"
- Wall Opening: 9" x 4-7/8" x 4"
- Spout Projection: 2-1/2"

BABY CHANGING STATION, HORIZONTAL – PLASTIC, SURFACE MOUNTED



9014

- FDA-approved fungus and bacteria-resistant plastic.
- Supports a static load of 300 lbs. (136kg).
- Vinyl-coated, adjustable safety strap assures child protection.
- Shaped to keep child restrained from rolling out of the bed.
- Easily opened/closed by user with one hand in any location.
- Bed liner/towel dispenser for user hygiene and convenience.
- Safety strap is easily adjustable by user for baby size and Sure-Lock latch securely resists opening until released by opposing finger pressure by adult caretaker/parent.

ASI Global Partitions offers the widest range of toilet partitions in the industry. To help you select what is best for your application, see below for the types of materials available, the hardware needed, and a guide to help you properly measure your toilet compartments.



Powder Coated steel partitions provide high-tech quality at an economical price. The baked enamel finish is electrostatically applied over galvanized steel and is highly resistant to wear, fading, staining, scratching, and scuffing. It is easily cleaned with mild soap and wiped dry.

Warranty 3 years*



Stainless Steel The elegance of stainless steel complements any design style and wears well. The corrosion resistant benefits of type 304 stainless steel allow for easy maintenance – even scratches can be buffed out. Satin or textured finish. Available in all styles.

Warranty 5 years*



Solid Plastic (HDPE) toilet partitions are the ideal choice for high-traffic areas. HDPE solid plastic is water resistant and unaffected by high humidity or corrosive environments. They never need painting and will not easily dent or chip. It is the material of choice for low maintenance.

Warranty 25 years*



Plastic Laminate Partitions with Moisture Guard™ Edge Banding fuses with the substrate creating a seamless beveled profile that eliminates any unsightly black lines that appear in standard Plastic Laminate, and is 3 times more resistant to moisture. Available in 48 colors/patterns.

Warranty 5 years*



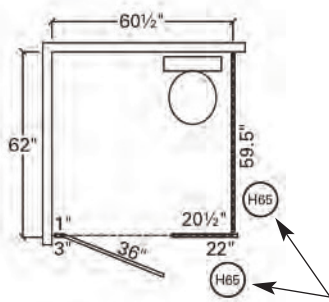
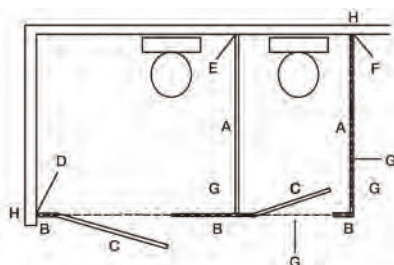
Phenolic Black Core partitions hold up even under severe moisture conditions from showers, pools, and saunas, or when maintenance includes hosing down toilet partitions. Ideal for where vandalism is a problem. In a full color spectrum – all with black edges. Available in all styles.

Warranty 25 years*



Phenolic Color-Thru™ partitions live up to their name, with surface color through and through. This product is impact, scratch, and graffiti resistant. It also has excellent screw holding power and all the advantages of traditional Phenolic performance.

Warranty 25 years*



Partition Component Reference Guide

- A - PANEL** Choose an overall depth and subtract 2.5" to allow for pilaster and hardware gaps.
- B - PILASTERS** Support the panels and are needed to hang and latch doors.
- C - DOORS** 24" are used for compartments 32" to 40" wide; 36" are used for handicap compartments.
- D - ONE EAR PILASTER BRACKET** Required when a pilaster is fastened to a wall or perpendicular to another pilaster.

- E - TWO EAR PANEL BRACKET** or "T" bracket is used on all but the end panel.
- F - ONE EAR PANEL BRACKET** or "F" bracket is generally used on end panels to avoid seeing signs of mounting.
- G - U BRACKET** Perpendicular panel to pilaster mounting.
- H - HEADRAIL** Runs across the top of the pilasters above panels and doors.
- I - HEADRAIL RETURN KIT** Fastens headrail to wall and each other.

ADA-Compliant Minimum Dimensions Typical Hardware Requirements:

- Pilaster-to-wall brackets
- Panel-to-wall brackets
- Panel-to-pilaster brackets
- Door hinge and ADA latch
- Reinforced panel for grab bar attachment
- Coat hook and bumper
- Outswing bumper
- Headrail and mounting bracket.

Denotes headrail length in inches.

*See full warranty at asi-globalpartitions.com (2-year warranty for non Moistue Guard™ Plastic Laminate).



Available in #50 quantities from
365 Equipment & Supply

- We offer a broad selection of bulk and packaged nails to cover all needs.
- Only the highest quality nails from the top manufacturers in North America and overseas.
- Strong supplier relationships and financial stability allow us to maintain a huge on-hand inventory throughout the year.
- Nails are packaged in sturdy, brightly colored boxes and have easy-to-read, high-gloss UPC coded labels.
- Extensive line of nails includes: bright, ring shank and galvanized common, vinyl coated sinks, galvanized box and siding, bright and galvanized finish, galvanized casing, various galvanized decking, hardwood trim, fluted and cut mansony, ring shank and phosphate drywall, ring shank underlayment, flooring, pole barn, various galvanized roofing, various spikes, pallet, plastic and steel cap, bright, coated and galvanized fence staples and other specialty nails.

Mazel & Co. offers a wide selection of construction fasteners that feature the highest standards in manufacturing and packaging to insure that our customers will have a high quality, comprehensive and competitively priced fastener line that is profitable for their stores and satisfies all their customers' needs.

If we don't stock it – we will go out of our way to accommodate your needs.

STRONG-POINT

Get the Point. Strong-Point.

Phillips Bugle Head, Hi-Low Thread, Phosphate Coating

STRONG-POINT
DryWall



- Meets ASTM A 510 for carbon steel manufacturing
- Meets ASTM C 1002 for attaching gypsum board to steel studs
- Type 'S' point for fastening gypsum to light gauge steel
- Used in gypsum board, plastic, and wood to metal applications

Size	Part No.	Qty.	Lbs. (Approx.)
6 x 1-1/4	614HL	8M	30
6 x 1-5/8	615HL	5M	22
6 x 2	620HL	3.5M	19
8 x 2-1/2	822HL	2.5M	22
8 x 3	830HL	2M	21

Material Application
Attaches gypsum board to wood or metal studs.

Phillips Modified Truss (R/W) Head, Zinc Plated

STRONG-POINT
Self-Drilling



- ICC-ES Evaluation Report: ESR-3528
- Meets ASTM C 1513 for cold-formed steel framing connections
- Meets F.I.P.-1000.7 for torsional strength and drill speed
- Meets SAE J78 for performance and dimensional specifications
- Meets ASTM F1941 for corrosion resistance



Size	Pt.	Part No.	Qty.	Lbs. (Approx.)	Drill Cap (in.)
8-18 x 1/2	2	M82Z	10M	37	.035 - .100

Material Application
Attaches wire lath to metal studs or metal to metal.

Phillips Bugle Head, Zinc Plated

STRONG-POINT
Self-Drilling



- ICC-ES Evaluation Report: ESR-3528
- Meets ASTM C 1513 for cold-formed steel framing connections
- Meets F.I.P.-1000.7 for torsional strength and drill speed
- Meets SAE J78 for performance and dimensional specifications
- Meets ASTM C 954 for attaching gypsum board to steel studs

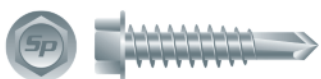


Size	Pt.	Part No.	Qty.	Lbs. (Approx.)	Drill Cap (in.)
6-20 x 1-1/4	2	D614Z	8M	32	.035 - .090
6-20 x 1-5/8	2	D615Z	5M	25	.035 - .090
6-20 x 1-7/8	2	D617Z	4M	23	.035 - .090
8-18 x 2-3/8	2	D823Z	2.5M	24	.035 - .100
8-18 x 3	2	D830Z	2M	24	.035 - .100

Material Application
Attaches gypsum, insulation, wood to metal.

Unslotted Indented Hex Washer Head, Zinc Plated

STRONG-POINT
Self-Drilling



- ICC-ES Evaluation Report: ESR-3528
- Meets ASTM C 1513 for cold-formed steel framing connections
- Meets ASTM A 510 for carbon steel manufacturing
- Meets SAE J78 for dimensional specifications
- Meets F.I.P.-1000.7 for torsional strength and drill speed
- Meets ASTM F1941 for corrosion resistance



Size	Pt.	Part No.	Qty.	Lbs. (Approx.)	Drill Cap (in.)
10-16 x 3/4	3	H1012	8M	50	.035 - .176

Material Application
Attaches metal to metal.



**Windex®
Commercial Original Glass
Cleaner (32 oz.)**

- Trusted by generations for its famous streak-free shine.
- Thanks to its patented ingredient, ammonia-D, windex original starts working on dirt and grime even before you wipe.
- Works great on glass, mirrors, chrome, plastic, stainless steel, formica, ceramics and much more.



**Scrubbing Bubbles®
Heavy Duty, All Purpose
Cleaner with Fantastic®
(32 oz.)**

- Kills 99.9% of bacteria.*
- Cuts tough grease and grime.
- Kills the viruses that cause the common cold and flu.**
- Leaves no smeary residue.

*When used as directed, kills Staphylococcus aureus (Staph), Enterobacter aerogenes (Enterobacter), Escherichia coli (E. coli), Salmonella choleraesuis (Salmonella), Listeria monocytogenes (Listeria), Streptococcus pyogenes (Strep).

**When used as directed, kills Rhinovirus Type 37 (common cold), Influenza A2/ (Hong Kong) (Influenza) (flu).



**Goof Off®
Heavy Duty Household
Remover (22 oz.)**

- Removes tough spots and stains other household cleaners can't.
- No harsh fumes and no oily residue.
- Works the first time.
- Safe on surfaces.
- Removes adhesives, crayon, marker, gum, scuff marks, stickers, asphalt, tar, tree sap.



**Simple Green® Industrial
Cleaner & Degreaser
Original Scent (128 oz.)**

- Cleans, degreases, deodorizes.
- Orally non-toxic, biodegradable and non-hazardous formula.
- Non-abrasive and non-corrosive.
- Use on hard and soft surfaces.
- Cuts through tough grease, oils, cutting fluids, built-up grime on equipment, engines, machinery, vehicles, & manufactured parts.
- Clean rinsing formula is ideal for surface prep prior to painting, plating or welding.
- Cost-effective concentrate. Use manually or in cleaning equipment.



**GOJO®
Hand Cleaning Towels,
10½" x 12" (72 Count)**

- Citrus fragrance.
- Heavy-duty hand and surface cleaning without water.
- Large, dual-textured, disposable scrubbing towels.
- Quickly removes dirt, oil, grease, adhesive, tar and paint.
- Formulated with skin conditioners to help prevent dryness and irritation.

**We are constantly adding
products to our line.
If you don't see it in this catalog,
please call us.
We most likely already have it or
we will get it for you.
(847) 756-3807**

Outdoor 300V SJTW Extension Cords (-40°F to 140°F)



3-Conductor 300V SJTW Extension Cords with Lighted End

ITEM #	CORD LENGTH	WIRE GAUGE	WIRE TYPE	WIRE COLOR	OUTLETS	PLUG TYPE	RECEPTACLE TYPE	POWER RATING AMPS	WATTS
05-00365	50 ft.	12/3	SJTW	Yellow/Black	1	5-15P	5-15R	15	1875
05-00366	100 ft.	12/3	SJTW	Yellow/Black	1	5-15P	5-15R	15	1875
05-00350	50 ft.	10/3	SJTW	Yellow/Black	1	5-15P	5-15R	15	1875

Portable GFCI (Ground Fault Circuit Interrupter)



15AMP Right Angle GFCI with Lighted Power Block

ITEM #	CORD LENGTH	WIRE GAUGE	WIRE TYPE	WIRE COLOR	OUTLETS	PLUG TYPE	RECEPTACLE TYPE	POWER RATING AMPS	WATTS
04-00101	2 ft.	12/3	SJTW	Yellow/Blue	3	5-15P	5-15R	15	1875

Halogen Work Lights



Halogen Portable Work Light

ITEM #	MAX WATTAGE	CORD LENGTH	WIRE GAUGE	WIRE TYPE	WIRE COLOR	PLUG TYPE	ON/OFF SWITCH
08-00209	500	1 ft.	18/3	SJTW	Black	5-15P	No

- Comfort Grip Handle
- 500W Bulb Included



Halogen Tripod Work Light

ITEM #	MAX WATTAGE	CORD LENGTH	WIRE GAUGE	WIRE TYPE	WIRE COLOR	PLUG TYPE	ON/OFF SWITCH
08-00211	1000	3 ft.	18/3	SJTW	Black	5-15P	Yes

- Extendable Tripod
- (2) 500W Bulbs Included



Halogen Replacement Bulb

ITEM #	DESCRIPTION	BULB RATING
Q500T3/CL	500W Halogen Bulb	500W



ECO MELT®

- Green concrete friendly snow melter
- Exceeds the melt value of a 40% calcium blend
- Contains two powerful melting accelerators
- Magnesium Chloride Free

Performance:

The faster an ice melter works, the less chance there is for a mishap to occur. That's why **ECO MELT®** contains two patented accelerating agents. **ECO MELT®** has been shown in Strategic Highway Research Program testing, to exceed the melt value of a theoretical 40% calcium chloride blend.

Controlled Spreading:

ECO MELT® undergoes a thorough screening process optimizing particle size for controlled spreading. Ossian's screening process reduces dust, provides more flexibility with spreader settings and reduces cost, allowing you to melt more with less product. **ECO MELT®** contains an anti-caking agent to ensure easy flow for ice melt spreaders and longer storage life.

Safe for Concrete and Vegetation:

ECO MELT® will not harm concrete and vegetation when used according to label instructions. **ECO MELT®** contains no added magnesium chloride which has been shown in studies to chemically attack concrete. Incorporating liquid anti-icing practices with dry application rates is essential to reducing chloride and salt impacts on the environment.

Powered by Patented Accelerators:



TECHNICAL INFORMATION

Effective Temperature	-10°F (-23°C)
Color	Blue
Packaging	50 lb. Bag

SELECT® LIQUID DE-ICER

- Effective to -15°F
- Chloride Free
- Non-corrosive
- Bio-degradable

Chloride Free:

SELECT® Liquid De-Icer is a powerful, non-chloride, bio-degradable, potassium acetate based, liquid de-icer. It is more effective than any other currently utilized liquid de-icing technology.

Non-Corrosive:

Most de-icers contain chlorides which can attack steel rebar in concrete, metal doorframes or sensitive helicopter machinery. **SELECT®** is non-corrosive and chloride free, making it an effective alternative for bridges, parking decks, helicopter landing pads and other corrosion sensitive areas.

Safe for Concrete and Vegetation:

Is chloride free and bio-degradable. Will not harm plants and vegetation when used according to label instructions nor contribute to water runoff concerns. **SELECT®** will bio-degrade 50-80% within five days. Complete biodegradation will occur within weeks.

Clear Liquid Eliminates Tracking:

SELECT® Liquid De-Icer is a clear, high performance de-icer effective for treating sidewalks and entryways to eliminate tracking and other housekeeping issues inside a facility.

DIRECTIONS:

Plow or shovel snow accumulations prior to applying product. On cleared surface apply 1 gallon per 1000 square feet. Application rates may vary based on conditions. Apply 1 - 2 hours prior to snow fall. If snowfall is expected during evening, product can be applied at dusk to aid in the removal of snow in the morning.



TECHNICAL INFORMATION

Effective Temperature	-15°F (-26°C)
Color	Clear
Composition	Potassium Acetate plus corrosion inhibitor
Flashpoint	Non-flammable
Freezing Point	<-58°F (-50°C)
Packaging	250 gal. tote

SJ12 - Multi-Color Bomber Jacket

Features

- Quilted liner 160g/m2.
- 2" Silver reflective material tape.
- Dual mic tabs.
- Multiple pockets.
- Chest: Clear ID badge holder.
- PU coated polyester weather proof shell.
- Concealed detachable hood.
- Elastic knit waistband and wrist cuffs.
- **Sizes:** M-5XL



Class 3

SJ110B - 2-IN-1 Bomber Jacket

Features

- Zip out removable fleece lining.
- Sleeves of the fleece jacket are lined for easy on/off.
- 2" silver reflective tape.
- Dual mic tabs.
- Multiple pockets.
- PU coated polyester weather proof shell.
- Concealed attached hood.
- Knit waistband and wrist cuffs.
- High-visibility green.
- **Sizes:** M-5XL



Class 3

SJ410B - 3-IN-1 Weatherproof Parka

Features

- PU coated Oxford polyester weather proof shell.
- Removable inner fleece jacket with lined sleeves.
- 2" silver reflective tape.
- Mic tabs on both shoulders.
- Four lower, fleece lined pockets with zipper.
- Fleece lined chest pocket.
- Hidden inside side pocket.
- Two large inside pockets.
- Concealed attached hood.
- D-ring pass through on back for fall protection.
- **Sizes:** M-5XL



Class 3

SJ02B-3 - Hooded Pullover Sweatshirt

Features

- Black elastic knit waistband and cuffs.
- Materials: Polyester fleece.
- 2" Silver reflective tape.
- Two lower pouch pockets.
- Birds-eye mesh lined hood with adjustable pull cords.
- Low pilling fleece.
- High-visibility green.
- **Sizes:** M-5XL



Class 3

Arctic Radwear® Cooling Vest & Wrap

Cooling Vest Features

- Unique 3-layer fabric system which absorbs, stores and releases water to keep your body temperature cool and safe.
- Adjustable stretch Spandex waist.
- Zipper closure.
- Anti-microbial treated to help prevent mold built-up and unwanted smells.



- **Sizes:** S/M-4X/5X

RCV10



Cooling Wrap Features

- Dimensions: 26" x 8.25".
- Secure around neck by pulling through slot opening.
- Reusable packaging.
- Lasts up to 5 hours, depending on humidity levels.

RCS50

V40815-CP - Universal Faceshield

Features

- Clear PETG.
- .040" x 8" x 15.5".

All headgear and cap adapters have universal pegs that will accommodate a wide variety of faceshields and fit most hard hats.



HG-410A4 - Cap Adapter - Bracket

Features

- Universal cap adapter.
- Universal visor bracket.
- All aluminum.



RWG13 - Foam Nitrile Gripper Glove

Features

- Blended nylon/spandex shell.
- Foam nitrile dipped palm.
- Elastic slip-on cuff.
- Meets EN388:2003 standards for abrasion, cuts, tear and puncture (4 1 3 1).

Sizes

Small
Medium
Large
X-Large
2X-Large



Comfortable, Durable
and Slip-Free Grip

RWG17™ - Dipped Winter Gripper Work Glove

Features

- 2-Ply, water resistant, 13 gauge orange high visibility nylon outer shell.
- 3/4 Dipped micro finish black latex coating.
- 7 Gauge acrylic terry liner.
- Seamless elastic slip-on cuff.
- Tested to EN388 standards for abrasion, cuts, tear and puncture (3 2 4 3).

Sizes

Small
Medium
Large
X-Large
2X-Large



CAUTION: This product
contains Latex.

RWG531 - Cut Level A2 Work Glove

Features

- Cut level 3, high visibility HPPE shell.
- Clear water based PUD coated palm.
- Elastic slip-on cuff.
- Made with FDA accepted material for use in food processing. Compliant with FDA 21 CFR 177.152.
- ANSI Cut Level A2.
- Meets EN388:2003 standards for abrasion, cuts, tear and puncture (4 3 4 4).

Sizes

Small
Medium
Large
X-Large
2X-Large



RWG550 - Cut Protection Level A2 Work Glove

Features

- 13 Gauge high performance polyethylene (HPPE) provides cut resistance.
- Polyurethane palm dip provides protection from abrasion in wet or dry conditions.
- Seamless design provides a comfortable fit.
- Tested to EN388 standards for abrasion resistance, blade cut, tear and puncture (4 3 4 2).
- ANSI Cut Level A2, EN388 Cut Level 3.

Sizes

Small
Medium
Large
X-Large
2X-Large



Boss® Yellow Slush Boot

Applications include construction, road work, utilities, environmental cleanup and remediation.

- Bar-tread non-slip outer sole.
- Fabric lined.
- Top strap and buckle.
- 17" Over-the-shoe yellow heavy-duty rubber knee boot.
- Sizes: 7 - 18
- Item # **2KP4481**



Boss® Black Buckle Boot

Rubber over-the-shoe arctic, 5-buckle boot.

- Bar-tread non-slip outer sole.
- Fabric lined.
- Over-the-shoe black rubber boots.
- 5 Adjustable buckles.
- Sizes: 9 - 16
- Item # **2PP6297**



Ambi-dex® Axle Disposable Glove

Disposable nitrile glove, powder free with textured grip.

- Disposable nitrile.
- 4 Mil blue.
- Industrial grade.
- Powder free.
- FDA 21 CFR compliant.
- 100 Gloves per dispenser box.
- Sizes: XS-XL
- Item # **2910PF**



Posi-Wear® BA™ Disposable Coveralls

PosiWear Breathable Advantage coveralls are good for manufacturing, pressure washing, painting, resurfacing or fiberglass handling.

- Proprietary technology against dry particulates and liquid sprays.
- Full length zipper front and exceptional strength for easy donning.
- ANSI sized for a wide range of motion.
- When extra protection is needed this attached hood and latex free elastic wrist and ankle do the trick to keep dirt and debris out.
- Elastic waistband for improved fit.
- Extremely low linting.
- Latex free.
- ASTM F1670 standard for blood penetration.
- NFPA 99 antistatic test.
- Size: M-6XL
- Item # **3606**



PIP® Leather Gloves

Industry grade. Ideal for construction, machine operation, utility work and many other general applications.

- Top Grain Pigskin leather construction provides great breathability due its porous texture, becomes softer with use and withstands moisture without stiffening.
- Top Grain leather is smooth, provides durability and dexterity.
- Drivers gloves feature slip-on styling to provide good fit and comfort.
- Keystone thumb is ergonomic, reduces hand fatigue, offers superior dexterity and durability.
- Elastic closure sewn inside glove for safety and comfort.
- Color coded hems for easy size identification.
- Sizes: S-3XL
- Item # **70-360**



PIP® PVC Dipped Glove

Used for mining, construction, refining, petrochemicals and handling oily materials.

- Coating has superior wet grip.
- Jersey lined for comfort and moderate insulation.
- Double dipped for enhanced liquid protection and extended wear.
- Black color hides dirt.
- Straight cuff adds additional length to protect the forearm from liquid run-off.
- Size: 10
- Item # **J1017RF**



Boss® Three-Piece Rainsuit

Ideal for construction, municipalities, shipyards, agriculture chemical spraying and industrial plant maintenance.

- Made with 0.35mm thick PVC and polyester fabric.
- Detachable hood with drawstring.
- Storm flap front, snap closure.
- 2 Flapped front pockets, snap closures to secure valuables.
- Cape vented back.
- Corduroy collar for comfort.
- Adjustable suspenders with triangular buckles for perfect fit.
- Front fly opening with snap.
- Size: S-8XL
- Item # **4035**



PC 609 Duck Pro® by Shurtape® Professional Grade, Co-Extruded Cloth Duct Tape

Use in a variety of industries, including the HVAC industry to repair thermal insulation and seal metal ductwork; the manufactured housing industry to seam bottom boards and for patching, seaming and sealing; and general purpose use for packaging, bundling, holding, wrapping and waterproofing.

- Cold-temperature adhesion.
- Excellent holding power with good conformability.
- Easy to unwind and tear.
- Waterproof backing.



PC 600 Contractor Grade, White Cloth Duct Tape

Use in industrial, plumbing, carpet, and splicing applications, as well as home and general repair applications, particularly where a discreet fix is needed. This poly-coated duct tape conforms well to a variety of surfaces.

- Tears easily by hand and will not twist or curl during application.
- Waterproof backing.
- Great for temporary indoor floor marking and removes cleanly from most surfaces for up to 3 weeks. Not recommended for hardwood floors or in direct sunlight.



CP 27® 14-Day ShurRELEASE® Blue Painter's Tape - Multi-Surface

For interior and exterior masking of multiple surfaces, such as painted walls, glass, vinyl, metal and wood, when easy, no-residue removal is a must.

- Medium adhesion.
- Easy, no-residue removal.
- Prevents lifting and paint seepage for cleaner paint lines.
- Great for temporary indoor floor marking and removes cleanly from most surfaces for up to 60 days. Not recommended for hardwood floors.



CF 120 / FrogTape® brand Painter's Tape - Multi-Surface

For interior or exterior masking on cured painted walls, wood trim, glass and metal. It is a medium adhesion masking tape made with PaintBlock® Technology, a super-absorbent polymer that reacts with the water in latex paint and instantly gels to form a micro-barrier that seals the edges of the tape to prevent paint bleed and deliver sharp paint lines.

- Medium adhesion.
- Treated with PaintBlock® Technology that seals tape edges.
- Withstands direct sunlight for up to 7 days.



PE 333 (104067) Non-UV-Resistant Polyethylene Vinyl Tape, Serrated

Used to mask surfaces, such as windows and doors, during stucco application and painting, as well as for seaming underslab vapor barriers and holding poly-sheeting when building containments. Designed with a special, high-tack synthetic adhesive, PE 333 maintains a watertight seal, even in severe environments and weather conditions.

- Non-UV-resistant polyethylene film tape.
- Excellent conformability.
- Maintains a watertight seal.
- Removes cleanly.



FLEX PUSH BROOM



Push brooms clean and remove fine dust and heavy-duty debris. For janitorial maintenance in commercial and industrial applications.

Item No.	Handle Type (Not Included)	Brush Width	Trim Length	Block Material
3424-FX	Flex	24"	3"	Wood

FLEX SWEEP HANDLE



Molded tough flexible connector makes this handle virtually unbreakable. No need for a brace.

Item No.	Size (Length)	Diameter
FX-60	5'	1-1/8"

HEAVY-DUTY CONTRACTOR'S BROOM



Made of best quality selected broom corn with Palmyra stalk center. Sewed 4 times and reinforced with a wire band. Made on a 1-1/8" diameter clear-lacquered handle.

Item No.	Size (Overall)	Handle Length
5038	38"	56-1/2"

ANGLE BROOM



Flagged green colored plastic is secured in an angled plastic cap. 12" angled sweeping surface enables you to sweep hard to reach corners and crevices. Metal handle.

Item No.	Size (Overall)	Handle Length
465	55"	48"

STREET BROOM – PALMYRA STALK



Staple set in a smooth sanded hardwood block and made from some of the highest quality material available. Built for use in rugged conditions. Wide flare on ends allows close sweeping to curbs.

Recommended Use: Wet or dry sweeping in dairy barns, street sweeping, highway work, etc.

Item No.	Handle Type (Not Included)	Brush Width	Trim Length	Block Material
1516-P	Tapered	16"	6-1/4"	Wood

COUNTER DUSTER – BEAVER TAIL



Filling material is staple set in clear lacquered hardwood block. Hang up hole in handle.

Recommended Use: Dusting and cleaning counters and work areas.

Item No.	Description	Size (Overall)	Brush Face	Block Material
58	Black Tampico	13-1/2"	9"	Wood

CURVED HANDLE WIRE SCRATCH BRUSH

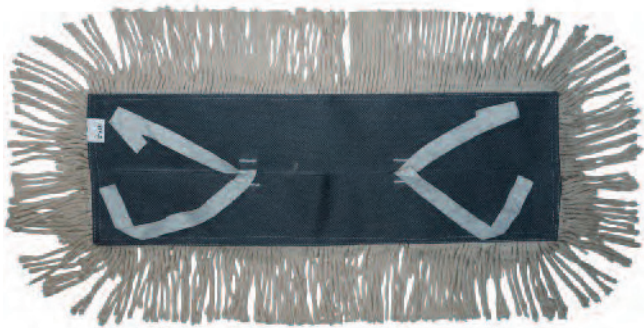


Stainless steel wire is staple set in a smooth wax tumbled hardwood block. General Purpose Wire Scratch brushes are manufactured to withstand the tough uses of today's professional.

Item No.	Length	Width	Trim Length	Rows
EC-1SS	14"	1"	1"	3 x 19

**We are continually adding to our product line.
If you don't find it in this catalog,
please give us a call – (847) 756-3807**

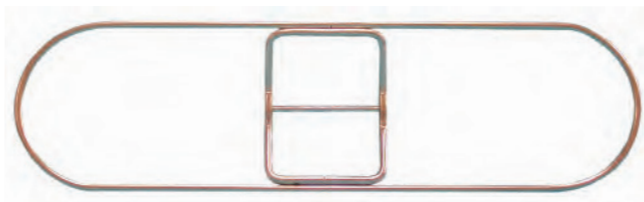
TREATED DUST MOP



Treated disposable dust mop heads are made of 4 ply cotton yarn. Yarn is sewn with 2 rows of stitching. Grey backing with double ties.

Item No.	Length	Width
EC-5136	36"	5"

DUST MOP FRAME



Frame is made of heavy-duty metal, welded construction, plated finish.

Item No.	Length	Width
5136-F	36"	5"

DUST MOP HANDLE - SNAP ON



Snap on handle for No. 51 & 52 Series Dust Mops and 5" frames. Plated metal connector, 360 degree action. Fits all 5" dust mops.

Item No.	Diameter	Handle Length	Overall Length
DM-60	1"	54"	57-1/2"

INDUSTRIAL LOOPED END MOP HEAD



Extra durable, cotton, synthetic/acrylic blend. General purpose mop with looped ends and tail band. Good for all purpose cleaning. Launderable.

Item No.	Size	Color
4924	Large	White

WET MOP HANDLE – MOP MATE



Quick change mop holder made of high impact plastic, resistant to chemicals and corrosion. Comes with a side gate and

includes a collet connector for easy handle assembly and self-locking thumb nut to prevent mop from working loose while in use.

Wider opening for easier insertion of mop head.

Gripper teeth help to hold in place.

Item No.	Diameter	Handle Length	Overall Length
90	1"	54"	60-7/8"

MOP BUCKET



Yellow mop bucket with wringer designed for durability. Bucket is corrosion resistant. No cracks or crevices to collect dirt. Wringer is resistant to cleaning chemicals. Comes with standard 3" ball bearing casters.

Item No.	Size
6035-3	35 quart



POLY SHEETING



Woven reinforced bands with perforated eyelets

Item #	Description	Size
610100CSRF	Clear String Reinforced Poly	10 ft. x 100 ft.
620100CSRF	Clear String Reinforced Poly	20 ft. x 100 ft.
620100CSFR	White FR String Reinforced Poly	20 ft. x 100 ft.

STRING REINFORCED POLY

- For heavy-duty worksite applications.
- Provides tough protection from the elements.
- Suitable for longer-term commercial applications.
- **Non-Flame Retardant** with seam and edge reinforcements (clear). Produced using a 2.5 x 2.5 tear resistant Leno scrim with double strings in machine direction. Total fabric weight is 90 g/m².
 - Coating is ultra-clear film quality virgin HDPE for maximum elasticity and light emission.
 - Woven reinforcing bands with perforations every 10.0cm for easy and secure fastening to scaffolding.
 - The most clear, light emitting, and durable string poly on the market today.
- **Flame Retardant** with the same reinforcing bands and eyelets as non-flame retardant (milky white).

SPECIFICATIONS

					Test Method: ASTM D751							
					Tensile		Tear		Elongation to break		Trapezoid tear	
Material	Scrim	Weight	Coating	Color	Weft	Warp	Weft	Warp	Length	Width	Length	Width
HDPE film grade fabric LDPE Leno scrim	2.5 x 2.5	90 g/m ²	4 mil film, 18 mil cross scrim	Clear FR: Milky White	65 lb.	92 lb.	22 lb.	37 lb.	16.8 lb.	22.7 lb.	24.8 lb.	16.5 lb.

MEDIUM DUTY POLY

- Use for dust or sawdust abatement.
- Moderate protection for interior or exterior jobs.
- Provides a barrier against vapor and airborne particles.
- 6 Mil sheeting suitable for use in excavation and gardening applications.

Item #	Mil	Size	Color
410100C	4	10 ft. x 100 ft.	Clear
420100B	4	20 ft. x 100 ft.	Black
420100C	4	20 ft. x 100 ft.	Clear
610100C	6	10 ft. x 100 ft.	Clear
620100C	6	20 ft. x 100 ft.	Clear



LIGHT DUTY POLY

- Lightweight, easy to drape and attach.
- Provides light protection from dust, paint, and more.
- Protects surfaces from workers, movers, pets, etc.

Item #	Mil	Size	Color
1216100C	1.2	16 ft. x 100 ft.	Clear



Grip-Rite Poly Sheeting is distributed by PrimeSource Building Products, Inc.

MANUFACTURERS REPRESENTED

Aervoe Industries, Inc.	7	Ossian, Inc.	30
ASI American Specialties, Inc.	24-25	Paslode® (ITW)	6
Cendrex	23	Protective Industrial Products	33
Deslauriers, Inc.	18	Radians, Inc.	9-12, 17, 31-32
Diablo/Freud Tools	2, 4	Robert Bosch Tool Corporation	5
Diamond Products	1	Safewaze	13-16
GOJO Industries, Inc.	28	SC Johnson, A Family Company	28
Goof Off® (W.M. Barr)	28	Shurtape Technologies	34
Green Kleen Products, Inc.	22	Simple Green®	28
Grip Rite®	37	Strong Man® Safety Products	21
Henkel Corporation	8	Tru-Cut Manufacturing	3
Intercorp	27	USG Corporation	19
Magnolia Brush	35-36	Voltec Power & Lighting	29
Mazel & Co.	26		



PRODUCT INDEX

5-Buckle Boots	33	Concrete Hopper	18	Engineer Safety Vest	12
Abatement Tarp	21	Cone Bars	17	Extension Cords	29
Access Door	23	Cones, Traffic	17	Eyewear, Safety	10-11
Adapter, Dust Extraction Bit	5	Construction Harness	13	Face Shield	31
Adhesive	8	Construction Nails	26	Fall Protection	13-16
Adjustable Chain Assembly	16	Construction Tarp	21	Finish Nails	6
Aluminum Cutting Blades	2	Contractor's Broom	35	Finish Wood Cutting Blades	2
Anchor Strap, Concrete	16	Cooling Vest	31	Fire Rated Access Door	23
Anchor, Roof	16	Cooling Wrap	31	Fire Rated Plywood	20
Angle Broom	35	Corded Ear Plugs	17	Fire Rated Poly Sheeting	37
Baby Changing Station	24	Cordless Tool Oil	6	Fire Rated Studs	20
Banded Earplugs	17	Corn Broom	35	Fire Resistant Drywall	19
Bars, Cone	17	Counter Duster	35	Fire Retardant Tarp	21
Bathroom Partitions	25	Coveralls	33	Flat Chisel	4
Battery, Lithium-ion	6	Cross Arm Strap	16	Floor Scraper	4
BB OES Plywood	20	Cup Grinders	1	Foam Ear Plugs	17
Bi-Focal Safety Glasses	11	Debris Netting	21	Frame, Dust Mop	36
Bits, Dust Extraction	5	Degreaser	28	Framing Fuel	6
Black Rubber Gloves	33	De-Icer	30	Framing Nails	6
Blades, Recip Saw	4	Demolition Tarp	21	Framing Saw Blades	2
Blades, Saw	1-2	Deodorizer	28	Fuel, Trim/Framing	6
Body Harness	13	Diamond Blades	1	Galvanized Nails	6
Body Panel Drill Bits	3	Disinfectant	28	General Purpose Saw Blades	2
Bomber Jacket	31	Disposable Coveralls	33	GFCI	29
Boots	33	Disposable Ear Plugs	17	Glass Cleaner	28
Brad Nails	6	Disposable Gloves	33	Glass Drill Bits	3
Brite Nails	6	Disposable Towels	28	Glasses, Safety	10-11
Broom	35	Door, Access	23	Gloves, Work	32-33
Brush, Wire Scratch	35	Double Ended Drill Bits	3	Grab Bars, Washroom	24
Bucket, Mop	36	Double Headed Nails	26	Grinding Cups	1
Buckle Boots	33	Drill Bits	3	Gripper Gloves	32
Bulb, Replacement	29	D-ring Extender	16	Halogen Replacement Bulb	29
Cable SRL	14-15	Drivers Gloves	33	Halogen Work Light	29
Cap Adapter	31	Drywall	19	Hand Towels, Disposable	28
Caulk	8	Drywall Screws	27	Handle, Mop	36
CDX Plywood	20	Duct Tape	34	Hard Hat	9
Chain Assembly, Adjustable	16	Duplex Nails	26	Harness	13
Chisel	4	Dust Containment Tarp	21	Headgear	9
Cleaner, Surface	28	Dust Extraction Bits	5	Heat Enclosure Tarp	21
Clear Coat	7	Dust Mop	36	Hex Head Screws	27
Clothes, Work	31	Duster, Counter	35	High Speed Blades	1
Coated Sinker Nails	26	Ear Plugs	17	Hole Anchor, Concrete	16
Collar, Hopper	18	Earmuff	17	Hooded Coveralls	33
Concrete Anchor Strap	16	Elephant Trunk	18	Hooded Sweatshirt	31
Concrete Hole Anchor	16	Enclosure Netting	21	Hopper, Concrete	18

PRODUCT INDEX

Ice Melt	30	Restoration Tarp	21	Toilet Partitions.....	25
Jacket	31	Retractable Cone Bars.....	17	Towelettes, Lens Cleaning	11
Jobber Length Drill Bits.....	3	Roof Anchor	16	Traffic Cones	17
Leather Gloves	33	Rubber Gloves	33	Treated Lumber.....	20
Lens Wipes	11	Safety Glasses.....	10-11	Trim Fuel	6
Lifeline, Self Retracting	14-15	Safety Harness	13	Tripod Work Light.....	29
Lithium-ion Battery	6	Safety Netting	21	Turbo Blades	1
Lubricating Oil	6	Safety Vest	12	Universal Trim Fuel	6
Lumber	19	Saw Blades	1-2	Vest, Safety	12
Lumber, Fire Rated	20	Scaffold Nails.....	26	Visor Bracket.....	31
Marking Paint.....	7	Scaffold Netting	21	Wallboard.....	19
Masking Tape	34	Scaffold Tarp	21	Washroom Accessories	24
Masonry Shims	18	Scaling Chisel.....	4	Waste Receptacle	24
Metal Cutting Blades	2	Screws.....	27	Weather Protection Tarp.....	21
Mirror	24	Scrubbing Towels.....	28	Web SRL	15
Mop	36	SDS-max Drill Bits.....	5	Wet Mop.....	36
Mop Bucket	36	SDS-plus Drill Bits.....	5	Wide Chisel.....	4
Nails	6, 26	Sealant	8	Wipes, Respirator	11
Netting, Debris	21	Self Retracting Lifeline	14-15	Wire Brush	35
OES Plywood	20	Self-Drilling Screws.....	27	Work Gloves.....	32-33
Oil, Cordless Tool.....	6	Sheetrock® Brand Drywall	19	Work Light.....	29
Paint, Marking.....	7	Shims, Masonry	18	Yellow Slush Boots	33
Painter's Caulk.....	8	Side Shields, Safety Glasses	11	Zinc Plated Screws	27
Painter's Tape	34	Silicone Sealant.....	8		
Panel, Access.....	23	Silver & Deming Drill Bits.....	3		
Paper Towel Dispenser.....	24	Sinker Nails	26		
Parka, Weatherproof	31	Slush Boots	33		
Partitions, Bathroom.....	25	Snow Melter.....	30		
Phillips Head Screws.....	27	Soap Dispenser (Liquid).....	24		
Plastic Broom.....	35	Spot Remover	28		
Plate Glass Mirror	24	Spray Paint.....	7		
Plywood.....	20	Spreader Bar, Cone.....	17		
Point Chisel.....	4	SRL, Cable	14-15		
Pole Barn Nails.....	26	SRL, Web	15		
Poly Sheeting.....	37	Stain Remover	28		
Polyethylene Tape.....	34	Steel Studs.....	19		
Portable GFCI.....	29	Steel Track (Stud)	19		
Push Broom.....	35	Strap, Cross Arm	16		
PVC Dipped Gloves	33	Street Broom	35		
Rainsuit.....	33	Studs	19-20		
Rebar Caps.....	18	Surface Cleaner	28		
Recip Saw Blades.....	4	Sweatshirt	31		
Reinforced Poly Sheeting	37	Sweeping Compound	22		
Replacement Bulb, Halogen	29	Tape.....	34		
Respirator Wipes	11	Tarp	21		

**Don't see it?
We can get it!**

At 365 Equipment & Supply
we pride ourselves on
being able to get you
what you need,
when you need it.

847-756-3807



Our commitment

At 365 Equipment & Supply, we're committed to providing our customers with a flawless process. From your initial contact with us to the final sale or return of your rental equipment, we strive to create a world class customer experience.

To achieve this, we focus on maintaining the following standards at 365:

- To bring unmatched value to our customers
- To differentiate ourselves from our competitors
- To dominate the competition in all markets with our offerings and customer service
- To promote 365 as a valuable partner, not just a product or service provider.

Conveniently located in the heart of the Midwest

847-756-3807

www.365equipmentandsupply.com



410 SOUTH HAGER AVE
BARRINGTON, IL 60010

365EQUIPMENTANDSUPPLY.COM

847-756-3807