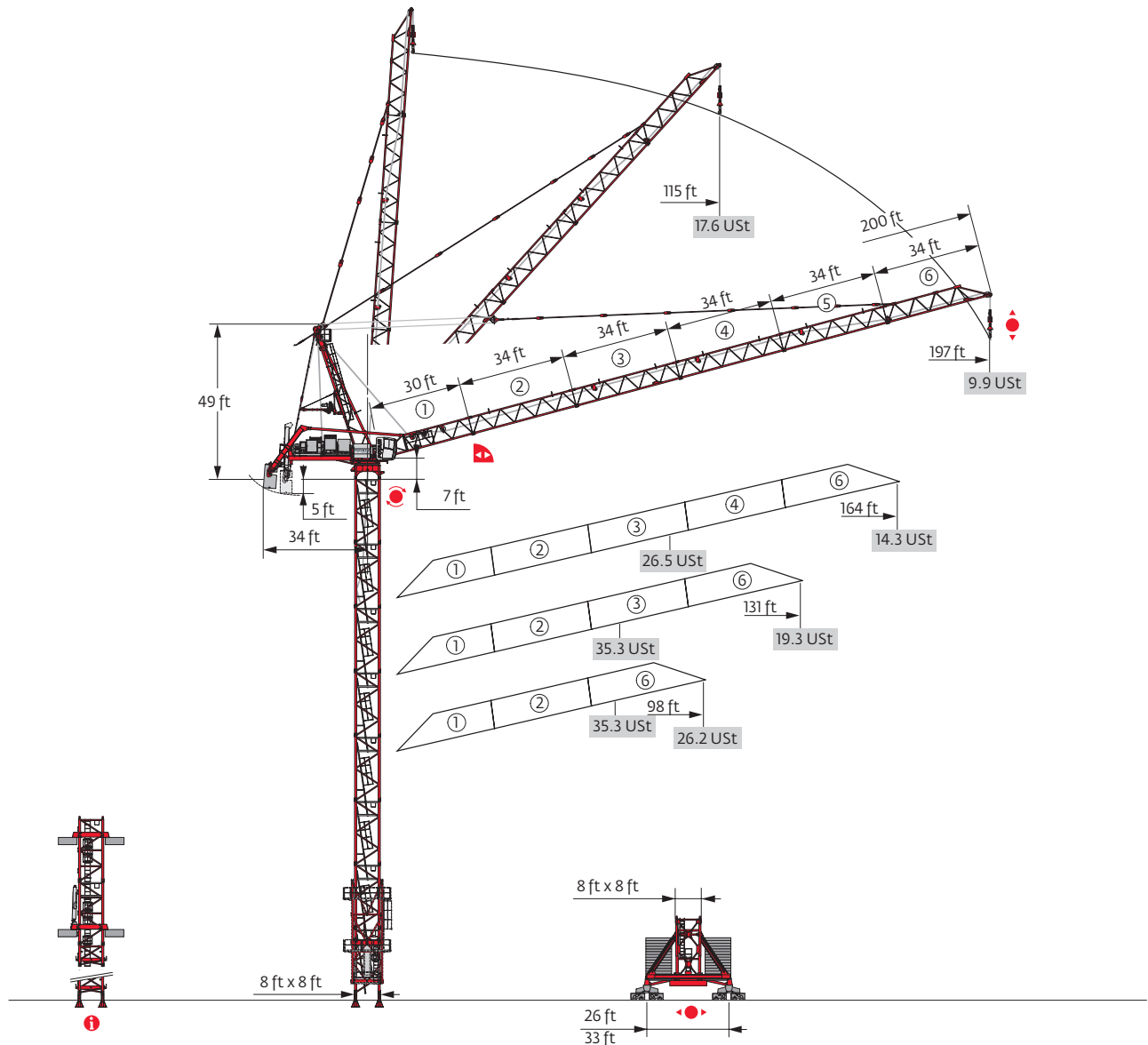


Potain MR 605 B H32

Data Sheet

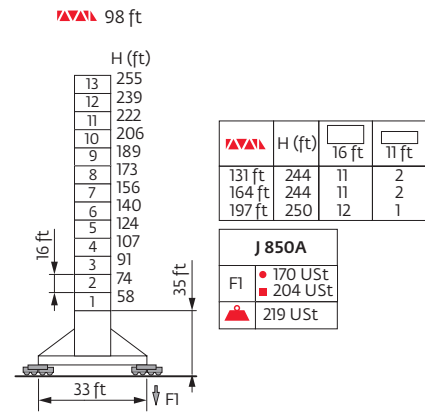
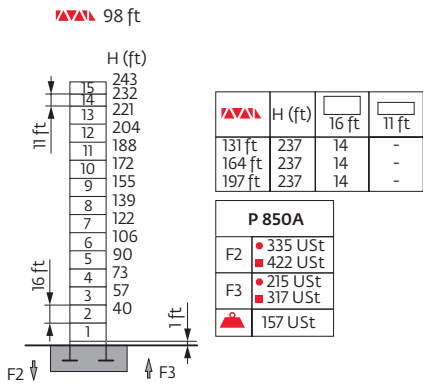
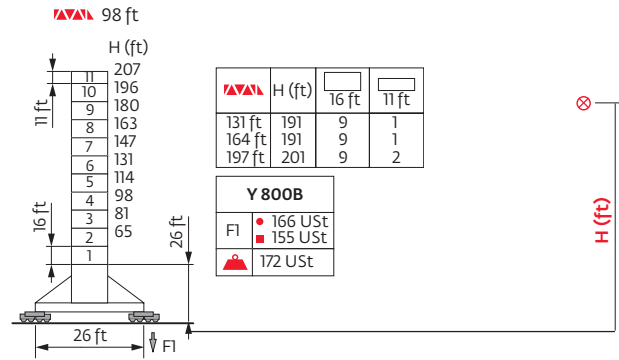
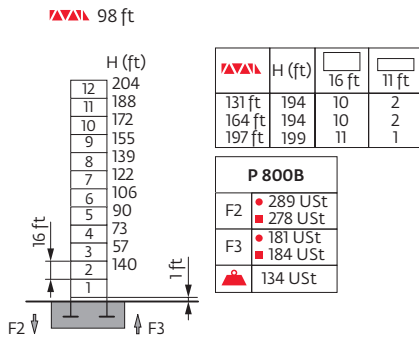
FEM 1.001-A3



Values have been rounded

Mast

8 ft



●	Reactions in service
■	Reactions out of service
▲	Weight without load, without ballast, with jib and max. height

Potain MR 605 B H32

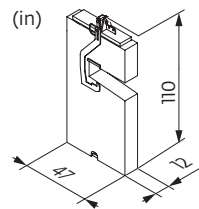
Base ballast

8 ft				
Y 800B		J 850A		
	H (ft)	UST	H (ft)	UST
98 ft	207	105.8	255	79.4
131 ft	191	92.6	244	79.4
164 ft	191	79.4	244	92.6
197 ft	201	145.5	250	158.7

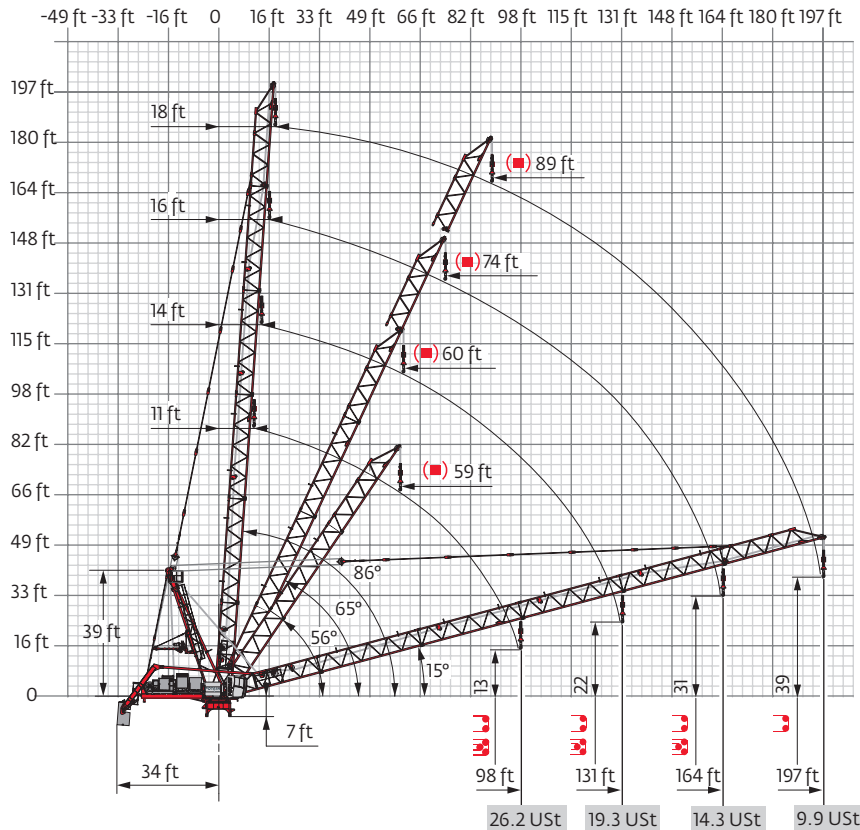
Counter-jib ballast

	13,228 lb	(lb)
98 ft	8	105,822
131 ft	9	119,050
164 ft	10	132,277
197 ft	10	

13,228 lb




Luffing jib

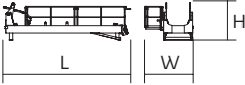
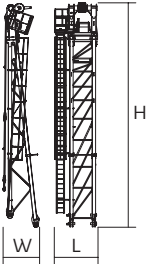
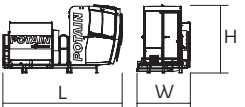
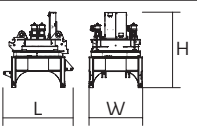
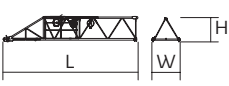
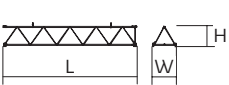
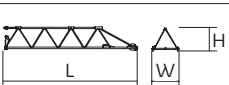
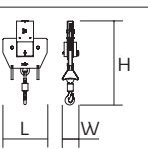

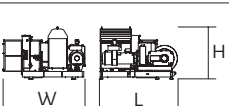


	Total ballast weight
	Weather vane position
	Tightened anchorage frame
	Loosened anchorage frame

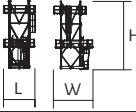


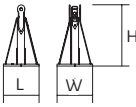
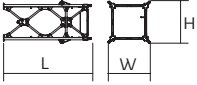
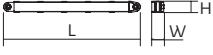
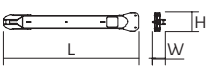

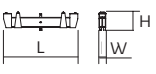
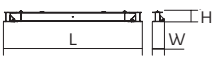
Component weights



Crane upper :  197 ft -  180/215 LBR



			L (ft)	W (ft)	H (ft)	lb (+/- 5%)
Counter-jib			21.7	8.5	6.6	7385
Towerhead			8.8	6	45.9	19,621
Cab		Ultra View	14.7	6.5	8.2	3329
Pivot		8 ft	9	8.2	9.9	28,991
Jib section		①	31.5	6.2	5.9	5732
Jib section		② ③ ④ ⑤	34.7 34.7 34.7 34.7	6.2 6.2 6.2 6.2	6 6 6 6	4211 4299 3616 3086
Jib section		⑥	34.1	6.2	6	5291
Hookblock			4.7	1.7	8.9	3549
Hoisting winch (+ rope)		180/215 LBR	13.3	9.3	7	23,248
Luffing winch (+ rope)		90/108 VBR	9.4	7.5	6.2	8047










Component weights


			L (ft)	W (ft)	H (ft)	lb (+/- 5%)
Climbing cage		8 ft	15.2	19	33.6	28,484
K 850/KR 849A KRMT 849A KMT 850.10A KMT 850.9A		8 ft	17.2 17.2 17.5 17.5	8.3 8.3 8.3 8.3	8.2 8.3 8.2 8.2	12,291 9017 12,015 10,582
KRMT 849C		8 ft	11.7	8.4	8.3	7066
Fixing angles		P 800B P 850A	2.5 3	2.5 3	4.2 4.9	1025 1841
Chassis mast		Y 800B J 850A	19.8 29.4	9.6 9.6	9.6 9.6	19,004 31,416
Strut		Y 800B J 850A	18.1 28.1	1.6 1.7	1.5 1.3	2447 3638
1/2 Side member		J 850A J 850A Y 800B	24 24.3 18.6	2.3 2.3 4.1	3.3 3.7 2.4	5688 5798 3351
Side member		Y 800B	39.4	4.1	2.4	6724
Ballast support		Y 800B	12.3	1.2	3	2392
Chassis beam		J 850A Y 800B	35.1 28.5	2.9 2.7	2.8 2.4	7319 4938










	Lorry 44 ft
	Container High Cube 40 ft. and/or Flat Rack 20 ft.


Potain MR 605 B H32







Mechanisms

400 V - 50 Hz											hp	kW	
	180 LBR 80	fpm	12/125	20/197	31/312	50/499	6/62	10/98	16/156	25/249	180	132	3576 ft
		USt	17.6	11.1	6.5	3.6	35.3	22.3	13	7.2			
	90 VBR	m/min	3 min 17 s								90	66	
	R - 13,2	rpm	0 → 0.67								3 x 6	3 x 4.4	
Y 800B 	RT 584 A1 - 2V	fpm	44 - 89								8 x 7	8 x 5.2	
J 850A 													

 IEC 60204-32	
400 V (+10% -10%) 50 Hz	180 LBR : 270 kVA

480 V - 60 Hz											hp	kW	
	215 LBR 80	fpm	15/151	24/236	37/374	60/597	8/75	12/118	19/187	30/299	215	158	3576 ft
		USt	17.6	11.1	6.5	3.6	35.3	22.3	13	7.2			
	108 VBR	m/min	2 min 44 s								108	79	
	R - 15,8	rpm	0 → 0.8								3 x 7.2	3 x 5.3	
Y 800B 	RT 584 A1 - 2V	fpm	52 - 105								8 x 8.4	8 x 6.2	
J 850A 													

 IEC 60204-32	
480 V (+6% -10%) 60 Hz	215 LBR : 325 kVA

	Hoisting
	Luffing
	Slewing
	Travelling
	Rated power
	Consult us