

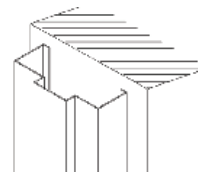


## Stock Hollow Metal Doors & Frames

### Stock Doors

- 18 Gauge Primed Cold Rolled Steel
- Honey Comb & Insulated Cores
- Reinforced for Closers
- Prepped for 4.5 x 4.5 Square corner Hinges
- Available With 161 Cylindrical Lock Prep & 86 Edge Prep (Mortise Pocket or Rim Exit Device)

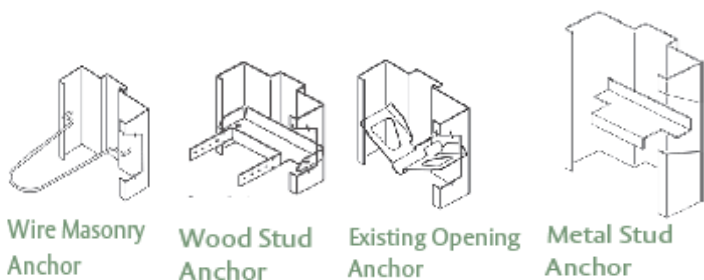
### Masonry & Studded Wall Applications Frame



Standard Application  
(Interior & Exterior Applications)

- 16 Gauge Primed Cold Rolled Steel
- Prepped and Reinforced For 4.5 x 4.5 Square Corner Hinges & 4-7/8 ASA Strike
- Assembled Welded or Knock Down
- Handed for Left or Right Swing (Must Specify Inswing or Outswing)
- Prepped for 3 Rubber Silencers
- Will Work With Block Walls, Poured Walls, Metal Studs or Wood Studs For New Construction and/or Existing Construction

### Anchors Available for Masonry & Studded Application Frames



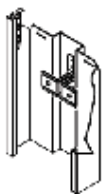
Wire Masonry Anchor

Wood Stud Anchor

Existing Opening Anchor

Metal Stud Anchor

### Anchors For Knock Down Drywall Application Frames



Compression Anchor

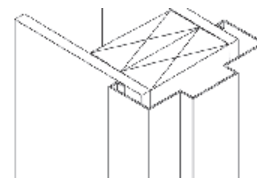
Many Sizes Available Please Forward Inquiries

Commercial Phone Number: (815)-527-9288

Commercial Fax Number: (815)-527-9282

Commercial Email: [commercialdoors@woolfdistributing.net](mailto:commercialdoors@woolfdistributing.net)

### Knock Down Drywall Application Frame



Drywall Application  
(Interior Applications Only)

- 16 Gauge Primed Cold Rolled Steel
- Prepped and Reinforced For 4.5 x 4.5 Square Corner Hinges & 4-7/8 ASA Strike
- Frames Ship Knocked Down
- Handed for Left or Right Swing
- Prepped for 3 Rubber Silencers



## Stock Architectural Grade Wood Doors



### Stock Veneer Species Available

- Plain Sliced Red Oak
- Rotary Natural Birch
- Primed Hardboard
- Plain Sliced White Maple
- Flat Cut Mahogany
- Plain Sliced Cherry
- Plain Sliced Walnut

### Stock Cores Available

- Bonded Particle Core (20 Min Rated Core)



- 45, 60 & 90 Minute Mineral Core



### Stock Size Slabs Available

- Bonded Particle Core & Mineral Core Doors

Up to 3/0 x 9/0 & Up To 4/0 x 8/0

- Stave Core Doors

Up to 4/0 x 8/0

- LSL Core Doors

Only Available in 4/0 x 9/0

Can Be Trimmed To Any Size Needed

Many Other Species and Sizes Available

Please Forward Inquiries

Commercial Phone Number: (815)-527-9288

Commercial Fax Number: (815)-527-9282

Commercial Email: [commercialdoors@woolfdistributing.net](mailto:commercialdoors@woolfdistributing.net)

- Stave Core



- LSL Core





# Light Commercial Product Selector

**ASSA ABLOY**  
Opening Solutions

Experience a safer  
and more open world

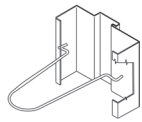




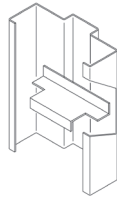
Step 1

Choose  
your frame:

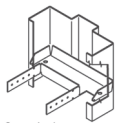
# Masonry | Interior/Exterior\*



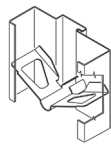
Wire Masonry  
Anchor



Metal Stud  
Anchor



Wood Stud  
Anchor



Existing Opening  
Anchor

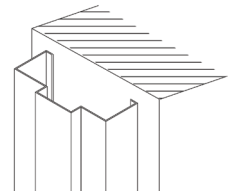
## Hollow Metal 5-3/4" Standard\* Frame

### Includes:

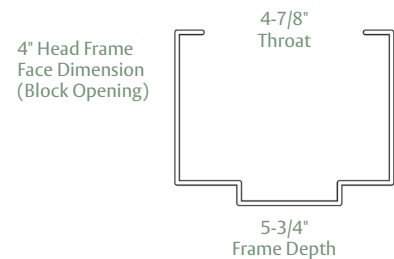
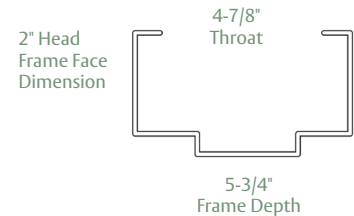
- 16 gauge - primed
- Reinforced for closer
- Prepped and reinforced for 3 - 4-1/2" square corner hinges and 4-7/8" ASA strike prep
- Assembled welded or knock down
- Handed for left or right swing (must specify - inswing or outswing)
- Anchors (must specify)
- Prepped for 3 rubber silencers
- Will work with block walls, poured walls, metal studs or wood studs for new construction and/or existing construction

Other sizes and profiles available special order

\* Standard Frame - Interior and exterior application



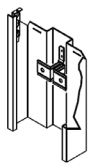
**Standard Application**  
(Interior & Exterior  
Applications)



Step 1

Choose  
your frame:

# Drywall | Interior\*\*



Compression Anchor



4 tab interlocking  
system jamb



4 tab interlocking  
system header

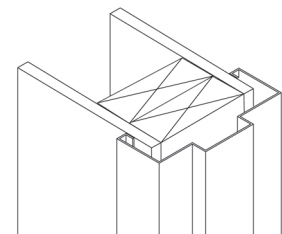
## Hollow Metal Drywall\*\* Frame

### Includes:

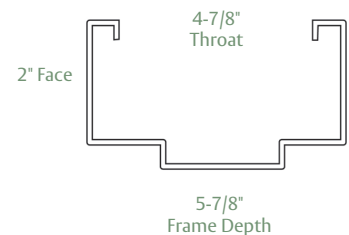
- 16 gauge - cold rolled - primed
- Prepped and reinforced for 3 - 4-1/2" square corner hinges and 4-7/8" ASA strike prep
- Integral adjustable compression anchor
- 4 tab interlocking system
- Knock down, ready to install
- Handed for left or right swing (must specify)
- Prepped for 3 rubber silencers

Other sizes and profiles available special order

\*\* Drywall Frame - Interior application only



**Drywall Application**  
(Interior Applications Only)

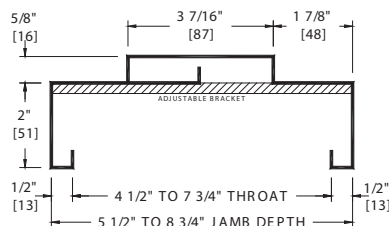




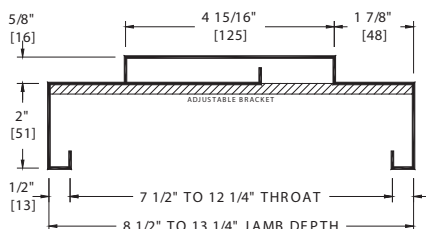
## Step 1 Choose your frame:

# Adjustable Frames

### 8-3/4" Expandable Jamb



### 13-1/4" Expandable Jamb



## Expandable Drywall Frame

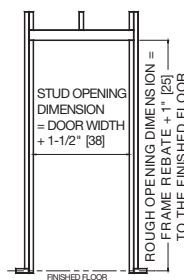
### Includes:

- 16 Gauge - A40 paintable galvalume steel
- Prepped with 3 - 4-1/2" high frequency, square corner hinge reinforcements and 4-7/8" ASA strike prep
- Fire-rated Warnock Hersey embossed label
- Rubber silencer holes (3 @ strike jambs & 2 @ double heads)
- Mechanical K.D. corner connection
- All double heads undersized by 1/8" from nominal width
- Non handed / Reversible
- #7 x 2-1/2" screws included (6 per jamb, 4 per head)
- Faces punched & dimpled for wall anchoring

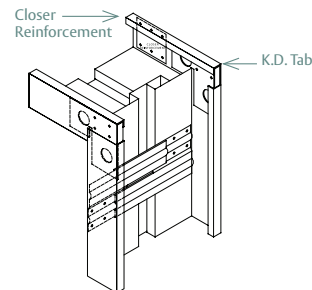
Other sizes and profiles available special order

**\*\* Interior and exterior application**

#### Rough Opening

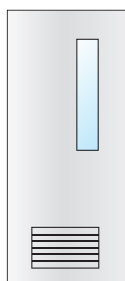


#### Corner Detail



## Step 2 Choose your door:

Flush Steel Door  
20 - 40 x 68, 70 and 80  
Some sizes special order



Available  
Narrow lite  
1/2 Lite  
Full Lite

Louvers Available  
contact with  
requirements

## Hollow Metal Door

### Includes:

- 18 gauge - primed
- Reinforced for closer
- Prepped for 3 - 4-1/2" square corner hinges
- Available with 161 cylindrical lock prep
- 86 edge prep (mortise) or rim panic reinforcement (exit device) available by special order
- Screwed in top cap
- Inverted channel with top cap

Special order sizes available

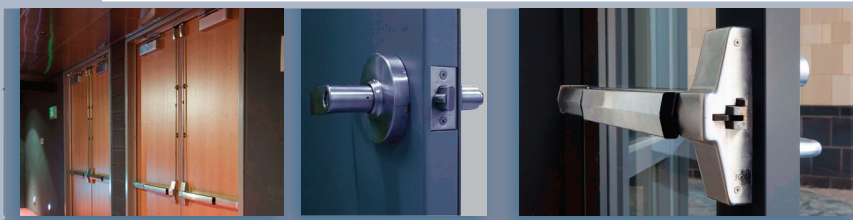


Bonded Solid Core  
Stave Core  
LSL Core  
Fire Core

## Stock Species

- Rotary Natural Birch
- Plain Sliced White Maple
- Plain Sliced Red Oak
- Plain Sliced Cherry
- Plain Sliced Walnut
- Flat Cut Mahogany
- Primed Hardboard
- Other Species available upon request

# Step 3 Choose your hardware:



## 1 Hang the Door



**Ball Bearing Hinge**  
4-1/2" x 4-1/2"  
MPB79



**NRP Ball Bearing Hinge**  
4-1/2" x 4-1/2"  
MPB79-NRP  
MPB91-NRP

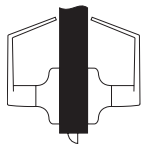


**Spring Hinge**  
4-1/2" x 4-1/2"  
MPS60

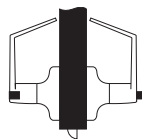
## 2 Secure the door with Lock, Flush Bolts, Panic Bars, etc.



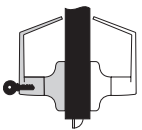
**Grade 2 Key In Lever Cylindrical Lock**  
Augusta Design  
626 Satin Chrome  
4600LN Series



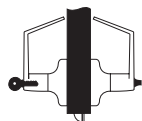
**Passage**  
4601LN  
*Both levers always active*



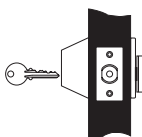
**Privacy**  
4602LN  
*Outside lever locked by inside push button. Inside lever always active. Unlocked by turning inside lever or emergency key in exterior.*



**Storeroom**  
4605LN  
*Outside lever always locked. Inside lever always active.*



**Entry**  
4607LN  
*Outside lever locked by inside push button. Unlocked by turning inside lever or key in exterior. Inside lever always active. If button is pushed and turned 90°, outside lever will remain locked.*



**Single Cylinder Deadbolt**  
D212  
*Key by Thumbturn.*



**High Traffic Vertical Rod Exit Device**  
2110-36 - Non Rated  
2110F-36 - Fire Rated  
630 Satin Stainless Steel



**High Traffic Rim Exit Device**  
2100-36 - Non Rated  
2100F-36 - Fire Rated  
630 Satin Stainless Steel



**Standard Traffic Rim Exit Device**  
1800-36 - Non Rated  
1800F-36 - Fire Rated  
689 Aluminum Painted



**Lever with Escutcheon Exterior Exit Device Trim**  
630 Satin Stainless Steel



**Key In Lever Exterior Exit Device Trim**  
626 Satin Chrome



**Rim Cylinder Use with Escutcheon Trim**  
626 Satin Chrome

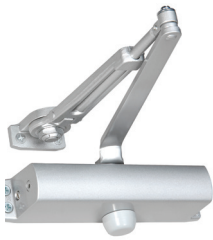


**Thumb Latch Escutcheon Trim**  
626 Satin Chrome

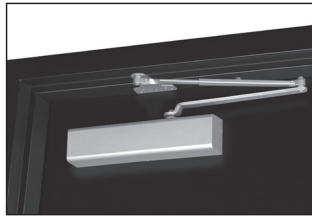




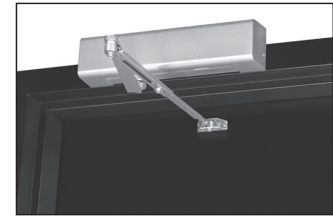
### 3 Control the Door with Closers - Grade 1



**Standard Traffic Door Closer**  
1101BF - Non-Hold Open  
1111BF - Hold Open  
689 Aluminum Painted



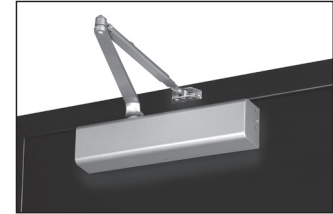
Parallel Arm Mount



Top Jamb Arm Mount



**Heavy Traffic Door Closer**  
2701 - Non-Hold Open  
2711 - Hold Open Includes Cover  
689 Aluminum Painted



Regular Arm Mount

*Closer includes hardware pack for regular arm, top jamb mounting, and parallel arm installation.*

### 4 Protect the Door with Push & Pull Plates, Kickplates, etc.



**Latch Protector**  
320CL  
32D



**Push Plate**  
4" x 16"  
70C 32D



**Pull Plate**  
4" x 16"  
107 x 70C 32D



**Steel Door Flush Bolt**  
555  
US26D



**8" Surface Bolt**  
580-8  
US26D



**Kick Down Door Holder**  
460  
26D

**Dome Floor Stop**  
441H  
US26D



**Concave Wall Bumper**  
409  
US32D



**Door Viewer**  
622  
US26D  
190° 9/16" hole



**Kick Plate**  
KP1050 32D  
8" x 34"  
10" x 34"

*Custom sizes available*



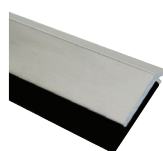
### 5 Seal the Door with Weatherstrip, Sweep and Threshold



**Weatherstrip/Smoke Seal**  
Adhesive Back  
S88D



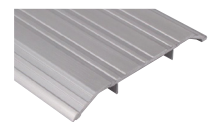
**Weatherstrip Perimeter Gasket**  
303AV



**Door Sweep**  
315CN



**Brush Weatherstrip**  
Brush Sweep  
18061CNB



**Threshold**  
ADA Compliant  
1/2" x 5" x 3 ft., 4 ft. & 6 ft.  
171A

# Step 4 Order your door

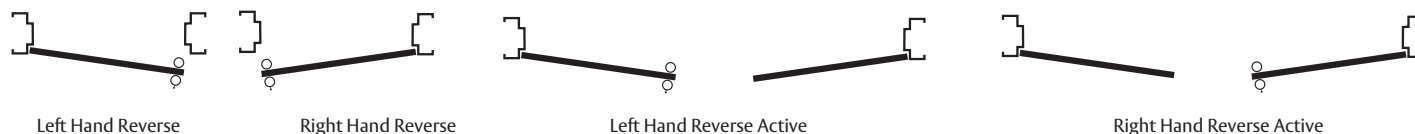


## Door Handings *(viewed from Keyed Side of Door)*

### Inswing



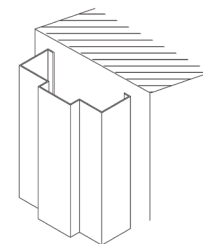
### Outswing



## Opening Sizes for Steel Frames

### Masonry Frame

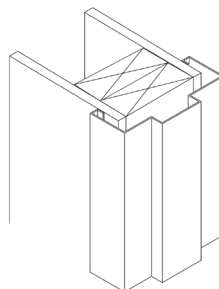
Door Size	Head Frame Face Dimension	Rough Opening		Unit Dimension	
		Width	Height	Width	Height
3/0 x 6/8	2"	40-1/4"	82-1/4"	40"	82"
3/0 x 7/0	2"	40-1/4"	86-1/4"	40"	86"
3/0 x 7/0	4"	40-1/4"	88-1/4"	40"	88"



Butted Application

### Drywall Frame

Door Size	Rough Opening	
	Width	Height
2/8 x 6/8	34"	81"
3/0 x 6/8	38"	81"
3/0 x 7/0	38"	85"
6/0 x 6/8	74"	81"
6/0 x 7/0	74"	85"

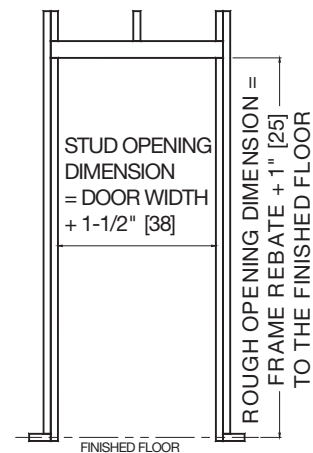


Slip-On Drywall Application

### Expandable Drywall Frame

Door Size	Rough Opening	
	Width	Height
2/8 x 6/8	33-1/2"	81"
3/0 x 6/8	37-1/2"	81"
3/0 x 7/0	37-1/2"	85"
6/0 x 6/8	73-1/2"	81"
6/0 x 7/0	73-1/2"	85"

### ROUGH OPENING DRYWALL INSTALLATION



Expandable Drywall Application



# Step 5 Fill out your checklist

The following checklist will be useful in gathering complete quoting/ordering information



Customer Name: \_\_\_\_\_ Job Name: \_\_\_\_\_

Application: ☐ Interior ☐ Exterior

## Frames:

Rough Opening Size: \_\_\_\_\_ Nominal Opening size (ie3070) \_\_\_\_\_

Wall Type: ☐ Concrete Block (new) ☐ Precast Concrete ☐ Metal Stud ☐ Wood Stud ☐ Other

Finished Wall Thickness: \_\_\_\_\_ Frame Depth \_\_\_\_\_

Frame Type: ☐ Masonry w/2" Header ☐ Masonry w/4" Header ☐ Drywall ☐ Custom (drawing attached)

Corner Construction: ☐ Knockdown ☐ Set-up & Welded

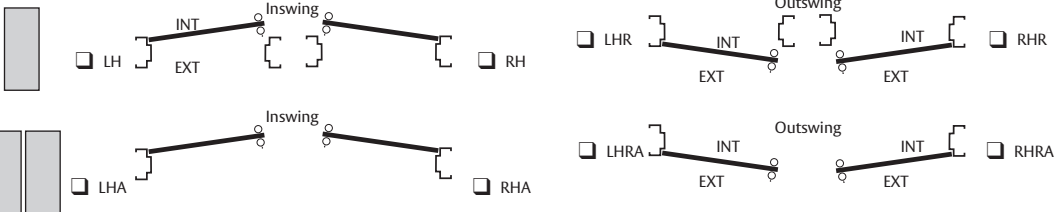

Anchor: ☐ Wire Masonry ☐ Wood Stud ☐ Metal Stud ☐ 2pc Adjustable (Drywall) ☐ Existing Opening with Expansion Bolt (Punched and Dimpled)

Gauge: ☐ 16 ☐ 14 ☐ Other \_\_\_\_\_

Fire Rating: ☐ B label (1-1/2 hour) ☐ C label (45 minute) ☐ (20 minute) ☐ (non-rated)

Opening: ☐ Single Door ☐ Pair Of Doors

Steel: ☐ Cold Rolled Steel ☐ Galvanneal

Handings: ☐ Single  ☐ Double 

## Doors:

Type: ☐ Flush Honeycomb ☐ Flush Polystyrene Core ☐ Embossed 6-Panel Polystyrene Core ☐ Wood (specify) \_\_\_\_\_

Design: ☐ Flush ☐ 6-Panel ☐ Vision Lite (specify glass size) ☐ Bottom Louver ☐ Omit Glass

Gauge: ☐ 18 ☐ 16

Fire Label: ☐ B label (1-1/2 hour) ☐ C label (45 minute) ☐ (20 minute) ☐ (non-rated)

Opening: ☐ Single Door ☐ Pair Of Doors

Astragal: ☐ with Astragal ☐ without Astragal

Handing: ☐ Inswing ☐ Outswing

Steel: ☐ Cold Rolled ☐ Galvanneal

## Hardware:

Lock \_\_\_\_\_ Lock Type    ☐ Cylindrical ☐ Deadbolt ☐ Mortise

Lock Function \_\_\_\_\_ Part Number \_\_\_\_\_ Finish \_\_\_\_\_

Hinges: ☐ Ball Bearing ☐ Ball Bearing NRP ☐ Spring \_\_\_\_\_ Finish \_\_\_\_\_

Door Closer: ☐ Heavy Duty ☐ Standard Duty \_\_\_\_\_ Finish \_\_\_\_\_

Exit Device: ☐ Rim Device ☐ Mortise Device ☐ Mortise Device Trim ☐ Surface Vertical Rod \_\_\_\_\_ Finish \_\_\_\_\_

Misc. Hardware: ☐ Threshold ☐ Weatherstrip ☐ Surface Bolts/Flush Bolts (pair) \_\_\_\_\_ Finish \_\_\_\_\_

Push Plate Size \_\_\_\_\_ Pull Plate Size \_\_\_\_\_ Finish \_\_\_\_\_

Kickplate Size \_\_\_\_\_ Finish \_\_\_\_\_